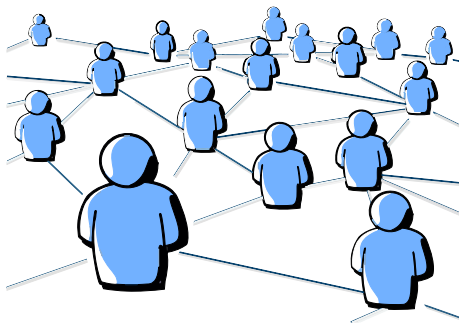


# LOCAL EVALUATION REPORT FINDINGS



## NUMBER OF TRAINEES (TOTAL: 553)

- ECHO: 35
- UMaine Clinical Geriatrics Colloquium: 191
- GEMS: 175
- UMaine Social Work Field Practicum: 4
- UMaine Lunch and Learns: 99
- SAVVY Caregiver: 7
- Habilitation: 42

## PERCENT OF PARTICIPANTS WHO REPORTED INCREASED LEARNING

- Geriatrics Colloquium: 73%
- Social Work Field Practicum: 100%
- Lunch and Learns: 92%



## GERIATRICS COLLOQUIUM RESULTS

- 85% of attendees rated all aspects of Colloquium as good or excellent
- 73% showed improvements in at least one learning outcome
- 78% applied a skill from colloquium during last 6 months

## QUARTERLY PARTNER SURVEY RESULTS

- New GWEP partnerships
  - community-based
  - academic
  - primary care
- Participants created a variety of GWEP-related presentations and outreach materials



## ECHO SESSION RESULTS

- 92% of participants reported confidence in recognizing and assessing dementia
- 100% reported confidence in:
  - using tools for cognitive assessment
  - recognizing hypoglycemia
  - advanced care planning

## HABILITATION TRAINING RESULTS

- 42 professionals attended 2 trainings
- Participant confidence rose in:
  - teaching staff health outcomes
  - helping patients maintain function
  - teaching staff to support patients



## PRIMARY CARE PRACTICE 4M DEVELOPMENT

- PCP has attained Level 1 Age-Friendly Health System certification
- Implementation of new workflow around screening and education
- Creation of patient education toolkit related to 4Ms incorporating plain language principles