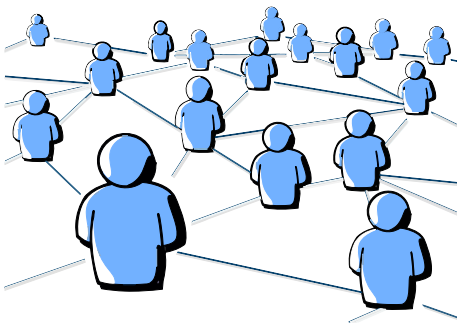


LOCAL EVALUATION REPORT FINDINGS



NUMBER OF TRAINEES (TOTAL: 557)



- ECHO: 35
- MAGIC: 4
- UMaine Clinical Geriatrics Colloquium: 191
- GEM: 175
- UMaine Social Work Field Practicum: 4
- UMaine Lunch and Learns: 99
- SAVVY Caregiver: 7
- Habilitation: 42

PERCENT OF PARTICIPANTS WHO REPORTED INCREASED LEARNING

- Geriatrics Colloquium: 73%
- Social Work Field Practicum: 100%
- Lunch and Learns: 92%



GERIATRICS COLLOQUIUM RESULTS



- 85% of attendees rated all aspects of Colloquium as good or excellent
- 73% showed improvements in at least one learning outcome
- 78% applied a skill from colloquium during last 6 months

QUARTERLY PARTNER SURVEY RESULTS

- New GWEP partnerships
 - community-based
 - academic
 - primary care
- Participants created a variety of GWEP-related presentations and outreach materials



ECHO SESSION RESULTS



- 92% of participants reported confidence in recognizing and assessing dementia
- 100% reported confidence in:
 - using tools for cognitive assessment
 - recognizing hypoglycemia
 - advanced care planning

HABILITATION TRAINING RESULTS

- 42 professionals attended 2 trainings
- Participant confidence rose in:
 - teaching staff health outcomes
 - helping patients maintain function
 - teaching staff to support patients



PRIMARY CARE PRACTICE 4M DEVELOPMENT

- PCP has attained Level 1 Age-Friendly Health System certification
- Implementation of new workflow around screening and education
- Creation of patient education toolkit related to 4Ms incorporating plain language principles