



Foundations in Transgender Healthcare: The Gender Clinic

The **Foundations in Transgender Healthcare ECHO**, led by The Gender Clinic, will provide up-to-date clinical information to increase clinical preparedness, improve attitudes, and augment the knowledge of healthcare providers and team members who work with this population, in any setting. This ECHO series will be comprised of six sessions, each with a different focus.

- ✓ **SOGI (Sexual Orientation and Gender Identity) in healthcare settings**
- ✓ **Mental Health**
- ✓ **Medical Care**
- ✓ **Sexual Health**
- ✓ **Surgery**
- ✓ **Healthcare Advocacy**



WHO?

Healthcare providers and team members at MaineHealth (medical providers, mental health providers, and support staff) – anyone who interacts with patients and would like to improve care for the Transgender* population.

**The term transgender is used broadly here to refer to transgender and gender non-conforming (TGNC) people.*

This ECHO will be **limited to 30 participants**. Early registration is recommended – preference will be given to increase geographic diversity as well as role diversity amongst the participants. *With enough interest, we will plan future ECHO trainings.*



WHERE?

Anywhere! Zoom allows you to participate from your organization or any location that is convenient for you.



WHEN?

Limited Series: **2nd Thursdays of the month 8-9AM, January – June 2022**

For more information, please contact **The Gender Clinic** at TGC@MMC.org.
To sign up for this ProjectECHO series, please [click here](#).

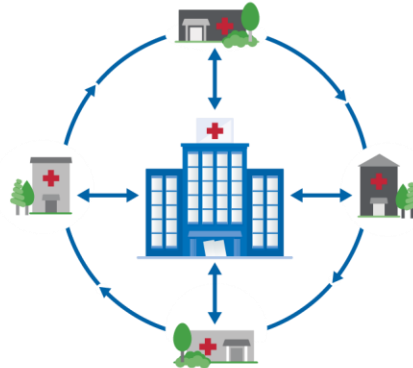
Are you a part of the ECHO?

www.mainehealth.org/healthcare-professionals/Project-ECHO
| ProjectECHO@mainehealth.org

In the U.S. and around the world, people are not getting access to the specialty care they need, when they need it, for complex and treatable conditions.

Moving Knowledge, Not Patients

Through technology-enabled collaborative learning, ECHO creates access to high-quality specialty care in local communities.



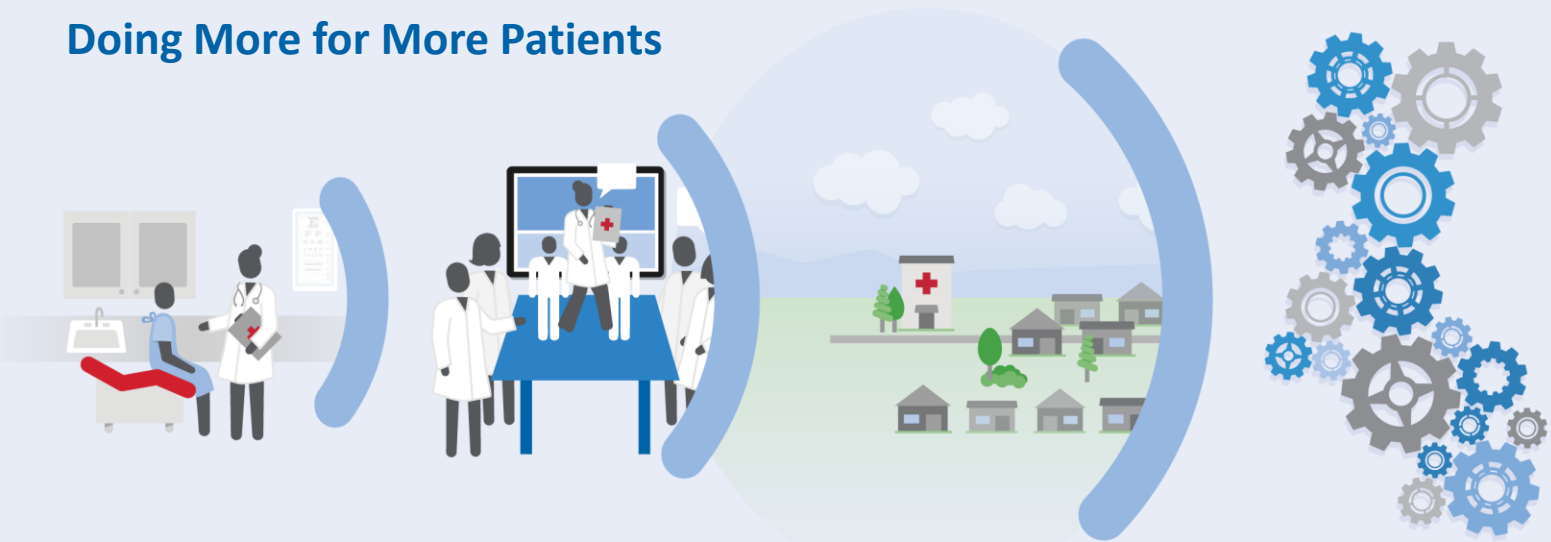
Hub and spoke knowledge-sharing networks create a learning loop:

Community providers learn from specialists.

Community providers learn from each other.

Specialists learn from community providers as best practices emerge.

Doing More for More Patients



PATIENTS

- Right Care
- Right Place
- Right Time

PROVIDERS

- Acquire New Knowledge
- Treat More Patients
- Build Community of Practice

COMMUNITY

- Reduce Disparities
- Retain Providers
- Keep Patients Local

SYSTEM

- Increase Access
- Improve Quality
- Reduce Cost

Changing the World, Fast



MAINE

- More than 160 community clinic sites
- 8,000 CME credits provided for free via ECHO-operated clinics



NATIONAL

- Operating in 30 states and growing
- 45 complex conditions



GLOBAL

- Operating 86 hubs in more than 13 countries and growing
- Goal of touching 1 billion lives by 2025

Are you a part of the ECHO?

www.mainehealth.org/healthcare-professionals/Project-ECHO
| ProjectECHO@mainehealth.org