

The Women's Health ECHO will focus on evaluation and management of a wide range of topics related to women's health and gynecology, including:

- ✓ Management of adnexal masses and when to refer
- ✓ Management of persistent HPV infection and abnormal PAP testing and how to apply national guidelines in difficulty situations
- ✓ Evaluation and management of complicated vulvovaginal disorders
- ✓ Tips and tricks for management of urinary incontinence and pelvic organ prolapse
- ✓ Tips and tricks for medical and surgical management of fibroids
- ✓ Access to national and regional experts in gynecology

**WHO?**

Women's health/gynecology providers in Maine, including physicians, physician assistants, nurse practitioners, certified nurse midwives and OB/GYN trainees.

**WHERE?**

Anywhere! The virtual model uses Zoom to allow you to participate from your organization or any location that is convenient for you

**WHEN?**

The 3rd Thursday of each month from 7:30 – 8:30 AM, starting January 20, 2022

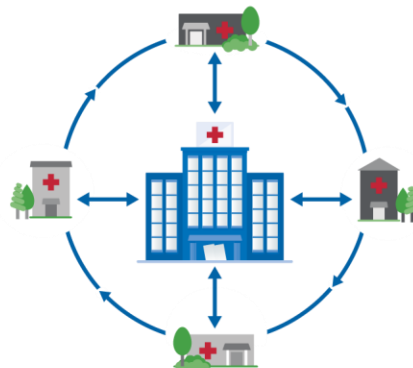
For more information, please contact the Women's Health ECHO Hub Team at WomensHealthECHO@mainehealth.org.

To sign up for this ProjectECHO series, please [click here](#).

In the U.S. and around the world, people are not getting access to the specialty care they need, when they need it, for complex and treatable conditions.

Moving Knowledge, Not Patients

Through technology-enabled collaborative learning, ECHO creates access to high-quality specialty care in local communities.



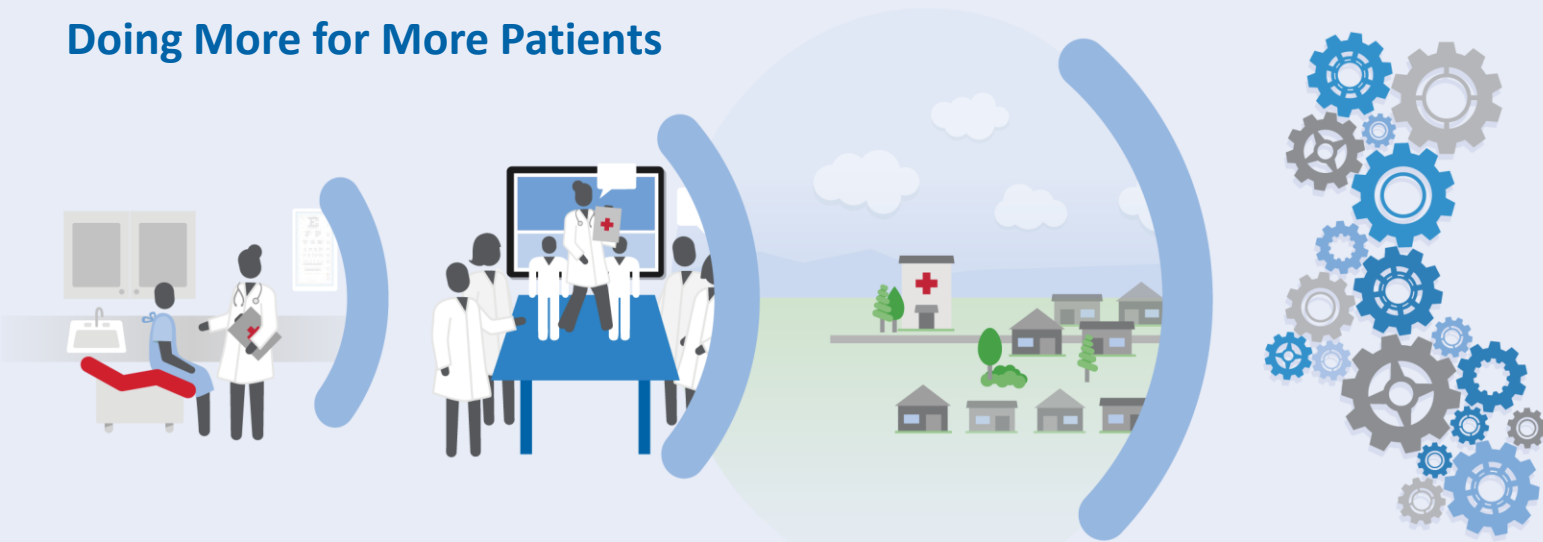
Hub and spoke knowledge-sharing networks create a learning loop:

Community providers learn from specialists.

Community providers learn from each other.

Specialists learn from community providers as best practices emerge.

Doing More for More Patients



PATIENTS

- Right Care
- Right Place
- Right Time

PROVIDERS

- Acquire New Knowledge
- Treat More Patients
- Build Community of Practice

COMMUNITY

- Reduce Disparities
- Retain Providers
- Keep Patients Local

SYSTEM

- Increase Access
- Improve Quality
- Reduce Cost

Changing the World, Fast



MAINE

- More than 160 community clinic sites
- 8,000 CME credits provided for free via ECHO-operated clinics



NATIONAL

- Operating in 30 states and growing
- 45 complex conditions



GLOBAL

- Operating 86 hubs in more than 13 countries and growing
- Goal of touching 1 billion lives by 2025

Are you a part of the ECHO?

www.mainehealth.org/healthcare-professionals/Project-ECHO
| ProjectECHO@mainehealth.org