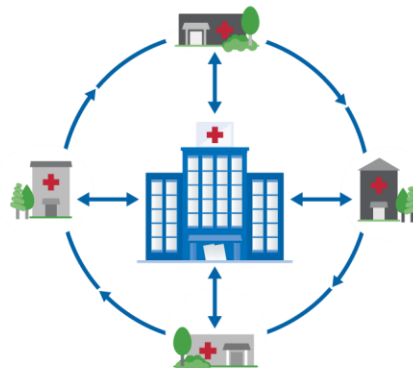


In the U.S. and around the world, people are not getting access to the specialty care they need, when they need it, for complex and treatable conditions.

## Moving Knowledge, Not Patients

Through technology-enabled collaborative learning, ECHO creates access to high-quality specialty care in local communities.



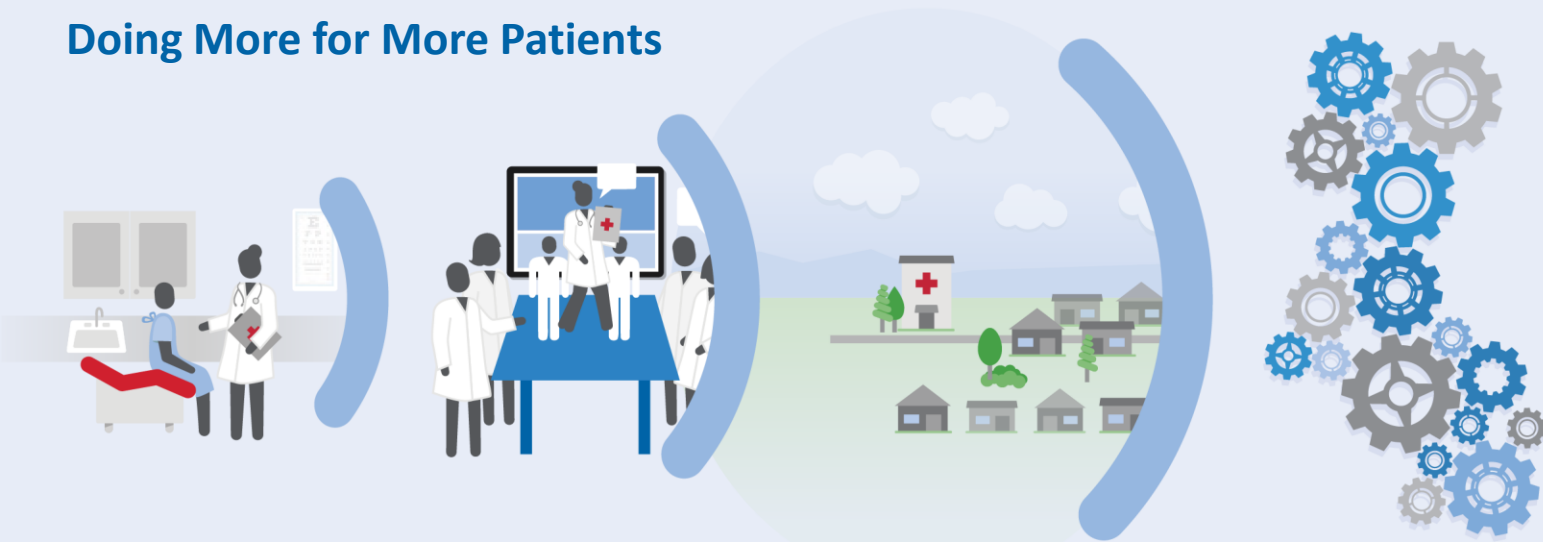
Hub and spoke knowledge-sharing networks create a learning loop:

**Community providers learn from specialists.**

**Community providers learn from each other.**

**Specialists learn from community providers as best practices emerge.**

## Doing More for More Patients



### PATIENTS

- Right Care
- Right Place
- Right Time

### PROVIDERS

- Acquire New Knowledge
- Treat More Patients
- Build Community of Practice

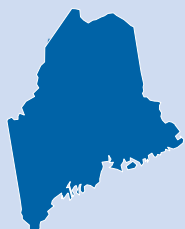
### COMMUNITY

- Reduce Disparities
- Retain Providers
- Keep Patients Local

### SYSTEM

- Increase Access
- Improve Quality
- Reduce Cost

## Changing the World, Fast



### MAINE

- More than 160 community clinic sites
- 8,000 CME credits provided for free via ECHO-operated clinics



### NATIONAL

- Operating in 30 states and growing
- 45 complex conditions



### GLOBAL

- Operating 86 hubs in more than 13 countries and growing
- Goal of touching 1 billion lives by 2025

Are you a part of the ECHO?

[www.mainehealth.org/healthcare-professionals/Project-ECHO](http://www.mainehealth.org/healthcare-professionals/Project-ECHO)  
| [ProjectECHO@mainehealth.org](mailto:ProjectECHO@mainehealth.org)



# Behavioral Health ECHO

Introducing...a new MaineHealth Project ECHO series that seeks to provide physicians and other care team members with skills, tools and techniques for identifying, diagnosing and treating common behavioral health conditions that are seen across our healthcare system.

Through didactic presentations from MaineHealth behavioral health experts specializing in psychiatry, psychology, counseling and related fields, participants will have the opportunity to learn about screening tools, evidence based treatment, medications and other techniques for treating patients with behavioral health conditions.

Real world case presentations, discussions and recommendations allow further opportunity to learn and put into practice the skills and expertise provided by our expert faculty.



## WHO?

Primary care providers and care team members, including physicians, physician assistants, nurse practitioners, medical assistants and social workers



## WHERE?

Anywhere! The virtual model uses Zoom to allow you to participate from your practice or any location that is convenient for you



## WHEN?

The 2<sup>nd</sup> Thursday of each month from 12-1pm, starting January 12, 2023

For more information, please contact Adele Hays at [adele.hays@mainehealth.org](mailto:adele.hays@mainehealth.org).

To sign up for this ProjectECHO series, please [CLICK HERE](#).

Are you a part of the ECHO?

[www.mainehealth.org/healthcare-professionals/Project-ECHO](http://www.mainehealth.org/healthcare-professionals/Project-ECHO)  
| [ProjectECHO@mainehealth.org](mailto:ProjectECHO@mainehealth.org)