

# Bioregional Planning for Resilient Rural Communities



# Thematic Focus

The Bioregional Planning for Resilient Rural Communities Network is an international network of interdisciplinary researchers and practitioners committed to:

- understanding the role that bioregional and systems strategies can play in supporting rural Northern communities
- activating those strategies in an intentional, place-based way to promote resilience in the face of climate change and other disruptive events.



# Defining Bioregion

“The term refers both to geographical terrain and a terrain of consciousness—to a place and the ideas that have developed about how to live in that place.”

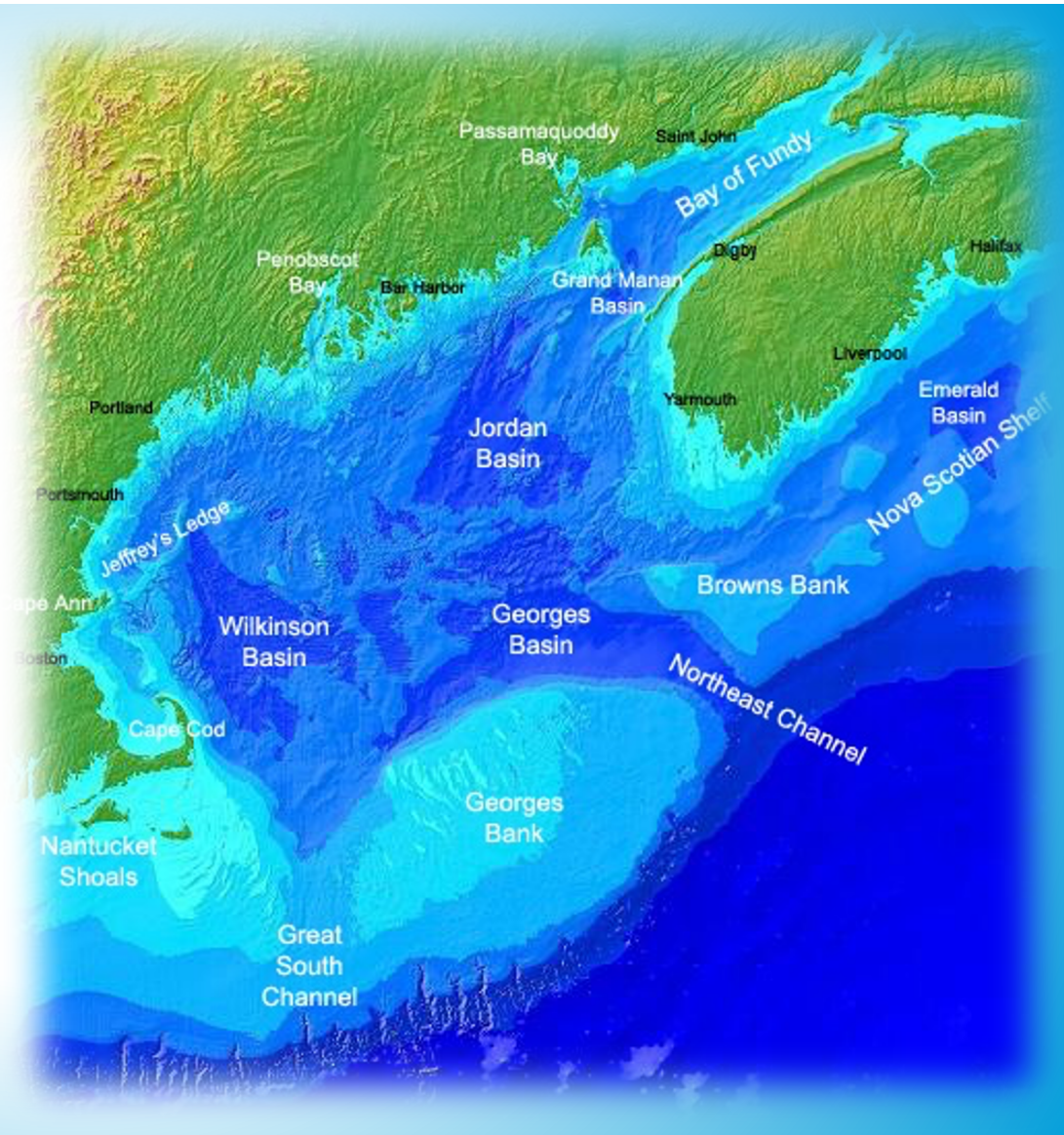
(Berg & Dagmann, 1977)

Peter B. Dasmann R. Reinhabiting  
California. *Ecologist*. 1977 Dec;7(10):399–401.



# The Power of Bioregioning

A bioregion's boundaries are not fixed by human or political factors, but rather take into account flora, fauna, climate, rivers, lakes, mountains and valleys. *It is a place-based organizing structure, most suited to understanding the potential mechanisms to supporting resilient communities.* (Thayer, 2003)



# The Network's Mission

The **UArctic Bioregional Planning for a Resilient Rural Communities** thematic network serves as an interdisciplinary platform by which institutions and local communities can leverage bioregional planning strategies and tool kits to support resilient rural communities in the North.



# Charting our Course - STRATEGIC PRIORITIES

- The network will [curate existing strategies and tool kits](#) and support their optimization and customization for specific bioregions;
- The network will place particular focus on the [engagement of the "people of the place"](#); on intergenerational engagement; and on engagement of community members on the margins.
- The network will provide programming, such as [webinars and symposia](#), to disseminate project based work and its impacts to the UArctic community.



# Honoring and Engaging The People of the Place

“The successful solutions we can develop to our most pressing environmental, social, and economic issues will be in collaboration with people and communities—especially those with the lived experience so critical to sustainable success.” – Terzah Poe, Inuit Educator & UNE North Advisor

“Working at the speed of trust” – Glenn Page, CEO SustainaMetrix



# Activating the U.N. SDGs



## **SDG 17 – Partnerships for the Goals**

**The network will endeavor to bring together subject experts who are also practiced in knowledge sharing and creation across disciplines. This combination of expertise, humility and communication skills is vital to the success of bioregional planning teams and processes.**



# GOALS and PLANNED ACTIVITIES

- Working Meetings
- Dissemination
  - Scientific Outputs
  - Policy Briefs
  - Public Engagement
  - Website & Social Media
- Mobility and Student Engagement
- Teaching and Training





## An Invitation

UArctic Members and Non-Members are welcome to join the Network!

- Email Network Chair Holly Parker at [hparker3@une.edu](mailto:hparker3@une.edu)

First Network Working Meeting in October!

- Join us at the Arctic Circle Assembly at Harpa or via Zoom
- Agenda will include project sharing and discussion of student and Indigenous community engagement.
- Date and Time TBD – stayed tuned!

Submit Bioregioning Resources and Events for listing on the network website!

PLEASE JOIN  
US!



# UArctic Thematic Network: The Power Of Bioregioning

---

SEPTEMBER 14, 2021

**BIOREGIONAL PLANNING FOR RESILIENT RURAL  
COMMUNITIES**

- Obama, Bibi and peace
- Huntsman blows his horn
- A soft landing for China
- The costly war on cancer
- How the brain drain reduces poverty

# Welcome to the Anthropocene



Geology's new age

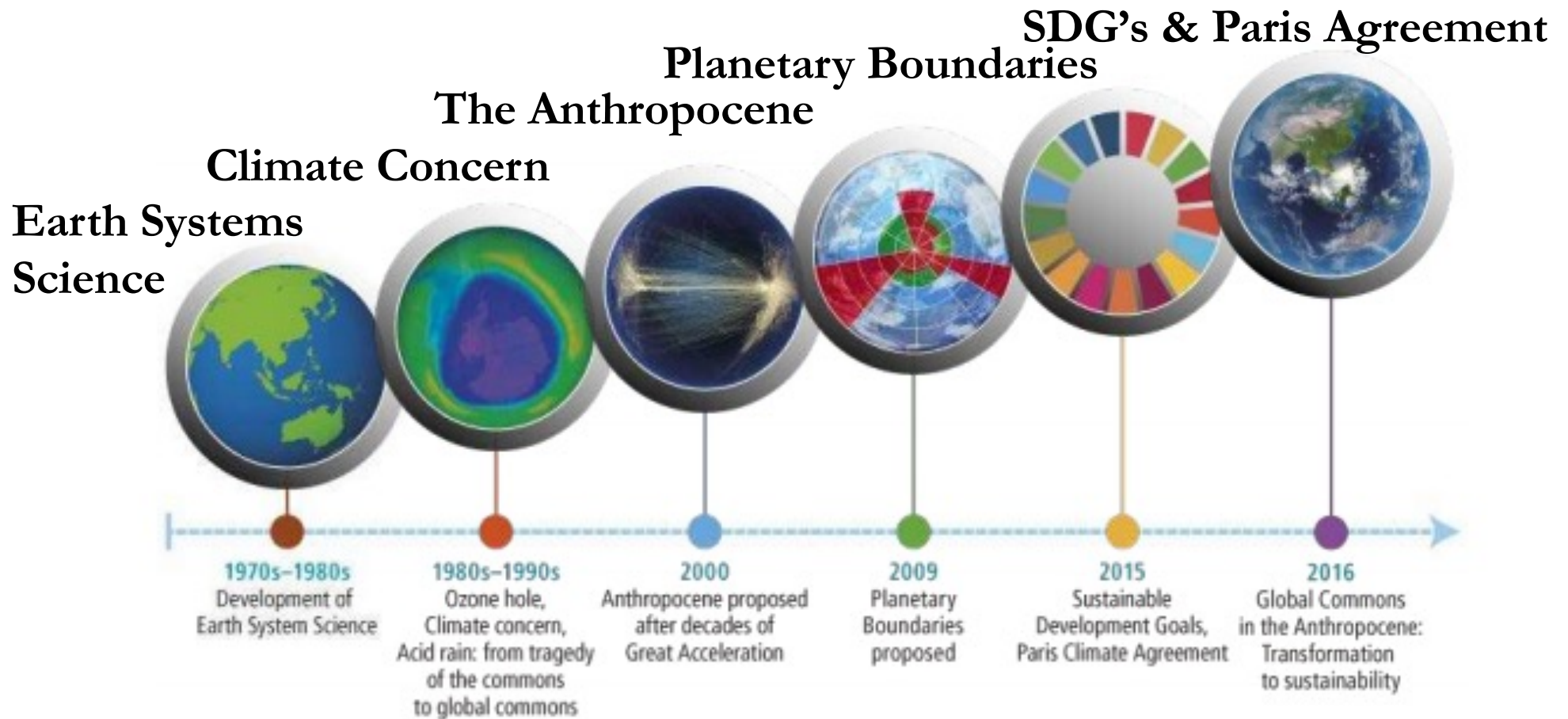


Projection

Now

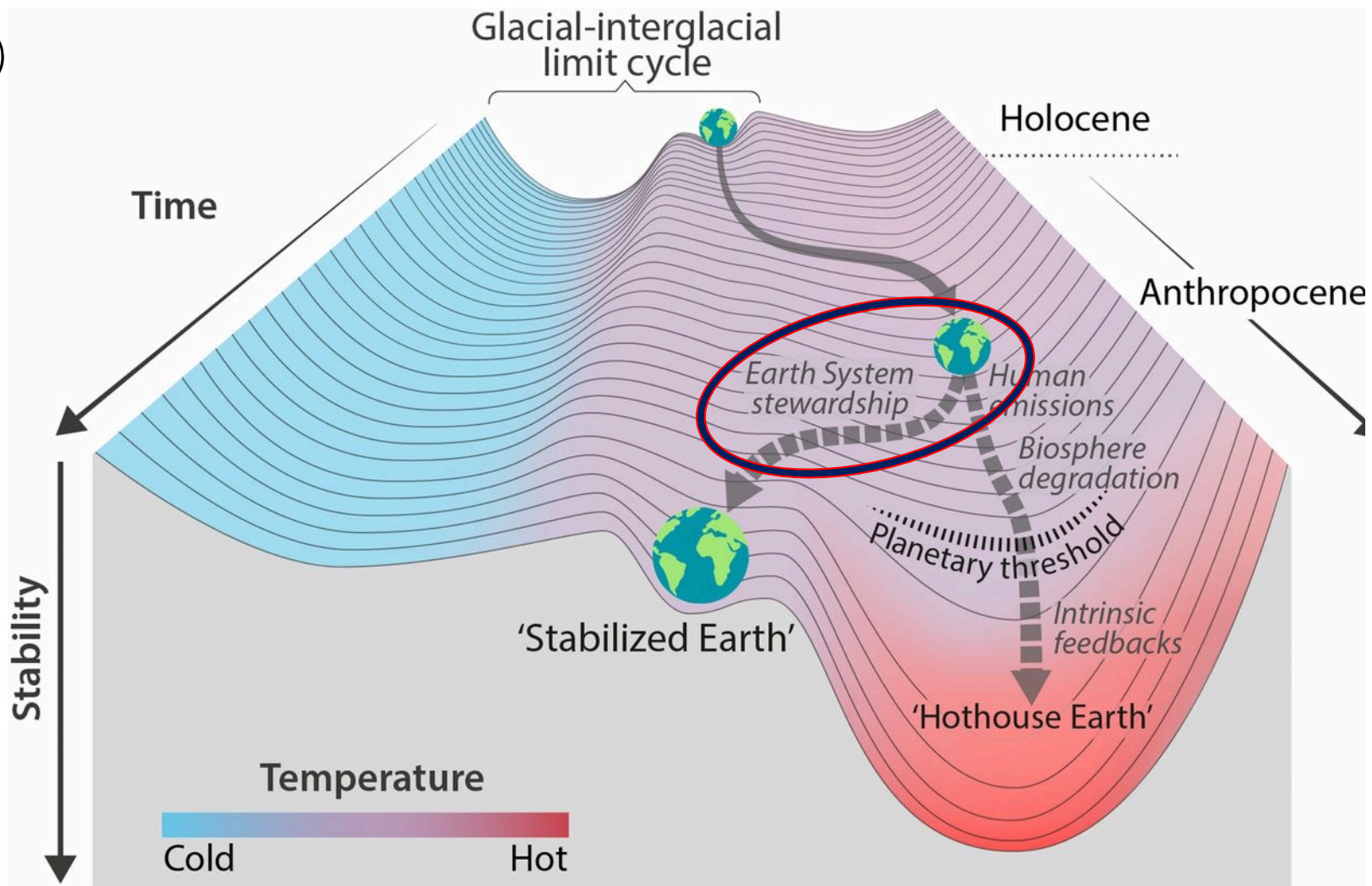
+100


# Response to Global Systems Change



# The Task Ahead

PNAS (2018)



A globe of the Earth is shown from space, with a complex network of glowing blue and orange lines overlaid on it. These lines represent global connectivity, such as internet cables, satellite networks, or data flows. The lines are most dense in the Eastern Hemisphere, particularly around East Asia and Europe. The globe is set against a dark background, and the overall aesthetic is futuristic and technological.

**Anthropocene as Context:**  
Know and face the realities of the  
Anthropocene—and act accordingly.

Image: Globaia



## **Global Thinking:**

Apply whole Earth, big-picture thinking to all aspects of bioregional work.

Image: Globaia

A photograph of a mountainous landscape. The foreground and middle ground are filled with dense, vibrant green forests. In the background, dark, jagged rock formations rise above the trees, partially shrouded in a thick, white mist or fog. The sky is overcast and grey, contributing to a somber and atmospheric mood.

## Act Glocally:

Global systems change must be contextually sensitive and grounded in the interactions between bioregional (more local) and global processes and scales of change.

Image: Globaia

## Next Wider Scale Northern Arc of the Atlantic

Engage Using a  
Global Perspective



- Arctic as air conditioner for the northern hemisphere
- The system is rapidly changing - at a tipping point
- World's newest ocean with huge opportunities
- Huge challenges affecting global security, economics, human & ecosystem health, biodiversity, cultures and livelihoods of millions of people
- **Rare window of opportunity to get it right for global governance**

## Overarching Integration:

Integrate the concept of transformation into the design, implementation and evaluation of bioregional plans.

Image: Globaia



# Global Oceans & Coastal Communities

Image: Globaia

# Framework for Establishing a Baseline

## Changes in Ecosystems



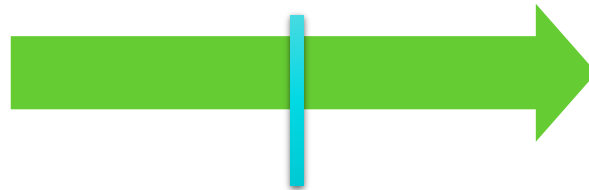
- Ecosystems Goods and Services
- Ecosystem Resilience
- Human Activities
- Human Well being

### Part 1: Looking Back

## Response To Change

### Part 2: Looking Forward

- Timeline of Key Issues
- Trends in Key Variables
- Governance by Era
- Case Studies of Governance Processes and Outcomes

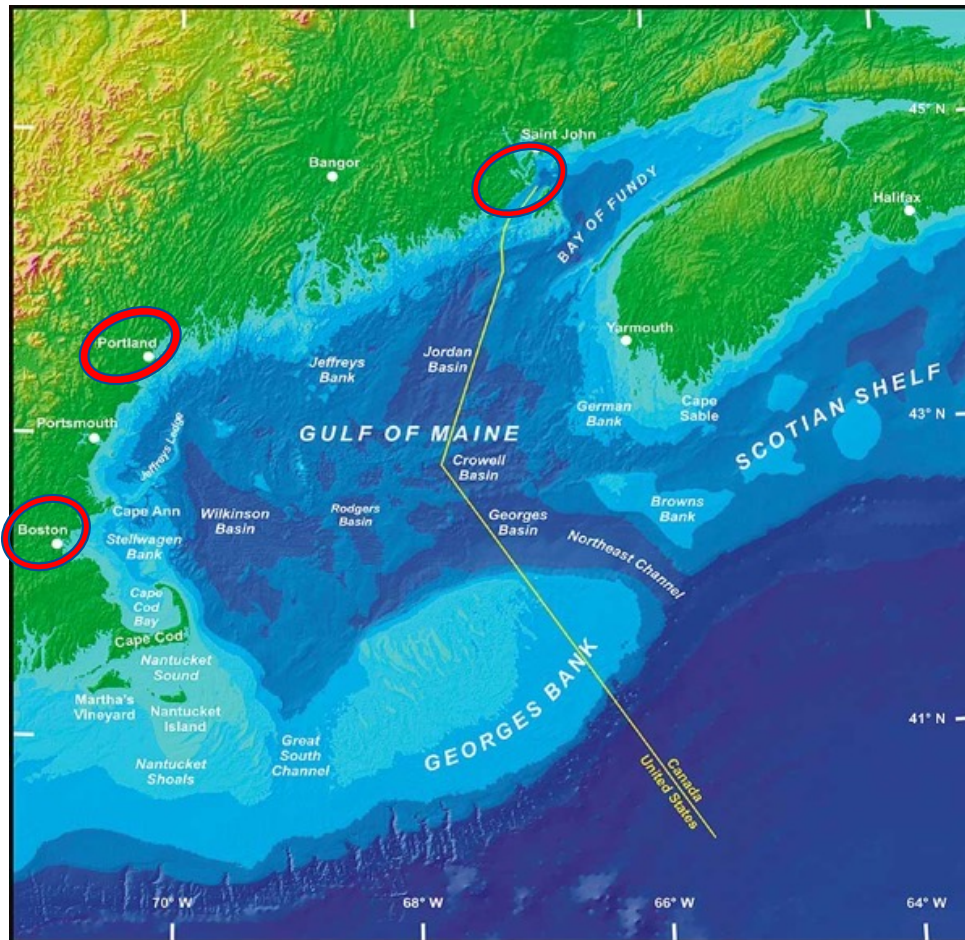


NOW

- Trend Projection and Climate Change
- Selection of Issues
- Goals and Objectives
- Selection of Partners
- Selection of Variables to be Monitored

Strengths and weaknesses of the existing governance system

# Three Bioregions: Boston, Portland, Cobscook Bay



- Three locations form the basis of our actions: urban area of Boston, urban/suburban area of Portland/ rural area of greater Cobscook Bay
- A Transformations Transect across these areas will allow for a systematic inquiry into how to better see the transformations systems
- The headquarters for the work is in Portland Maine at the New England Ocean Cluster on Commercial Street.
- All three locations have physical spaces of learning
- **This is a novel initiative, there are no others doing this level of integrative systems work.**

# How To:

---

- Define the Area of Focus and Next Wider Scales
- High Quality Engagement of Participants
- ID Trends in Key Variables over Time
- Build a Timeline With Your Stakeholders
- Co-create a set of Governance Case Studies
- Set of Reference Points to Measure Progress

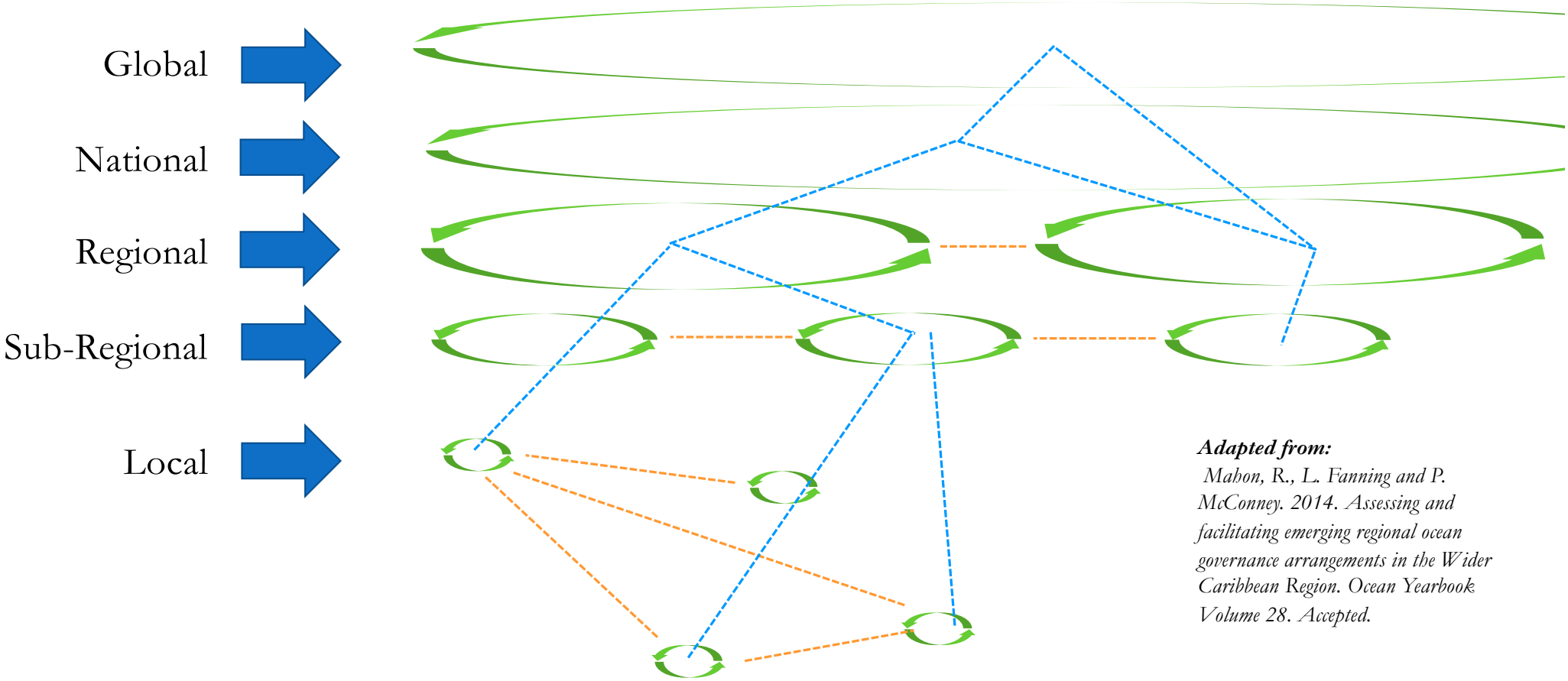


# Seeing the “Green Shoots” of Change

---

- Food systems (agroecosystems, ecological aquaculture)
- Education systems (transforming rural education/)
- Ecosystem Restoration (riverine/salmon, coastal)
- Ecosystem-Based Fisheries Management
- Food Sovereignty for Indigenous Communities
- Communications Systems (Broadband for rural areas)
- Finance (systems-level investing)
- Tourism (Ecotourism, conservation/culture-based)
- Integrated public health/wellness for all ages

# Seeing Change Across Scales



**Adapted from:**  
Mahon, R., L. Fanning and P. McConney. 2014. *Assessing and facilitating emerging regional ocean governance arrangements in the Wider Caribbean Region*. *Ocean Yearbook* Volume 28. Accepted.

# Seeing Interconnections Across Scales

---

## **Seeing the issues and human response (Learning Journeys)**

- Visualizations, models, stories, case studies

## **Connecting transformations systems (Net-weaving)**

- Systems mapping, SNA, GIS, and acting

## **Radical learning about transformations systems (Diagnosis)**

- What's being learned, where are the synergies, what's missing, what forces are holding back change?

## **Accelerating transformations systems (Synergy)**

- How to scale within a transformations systems?

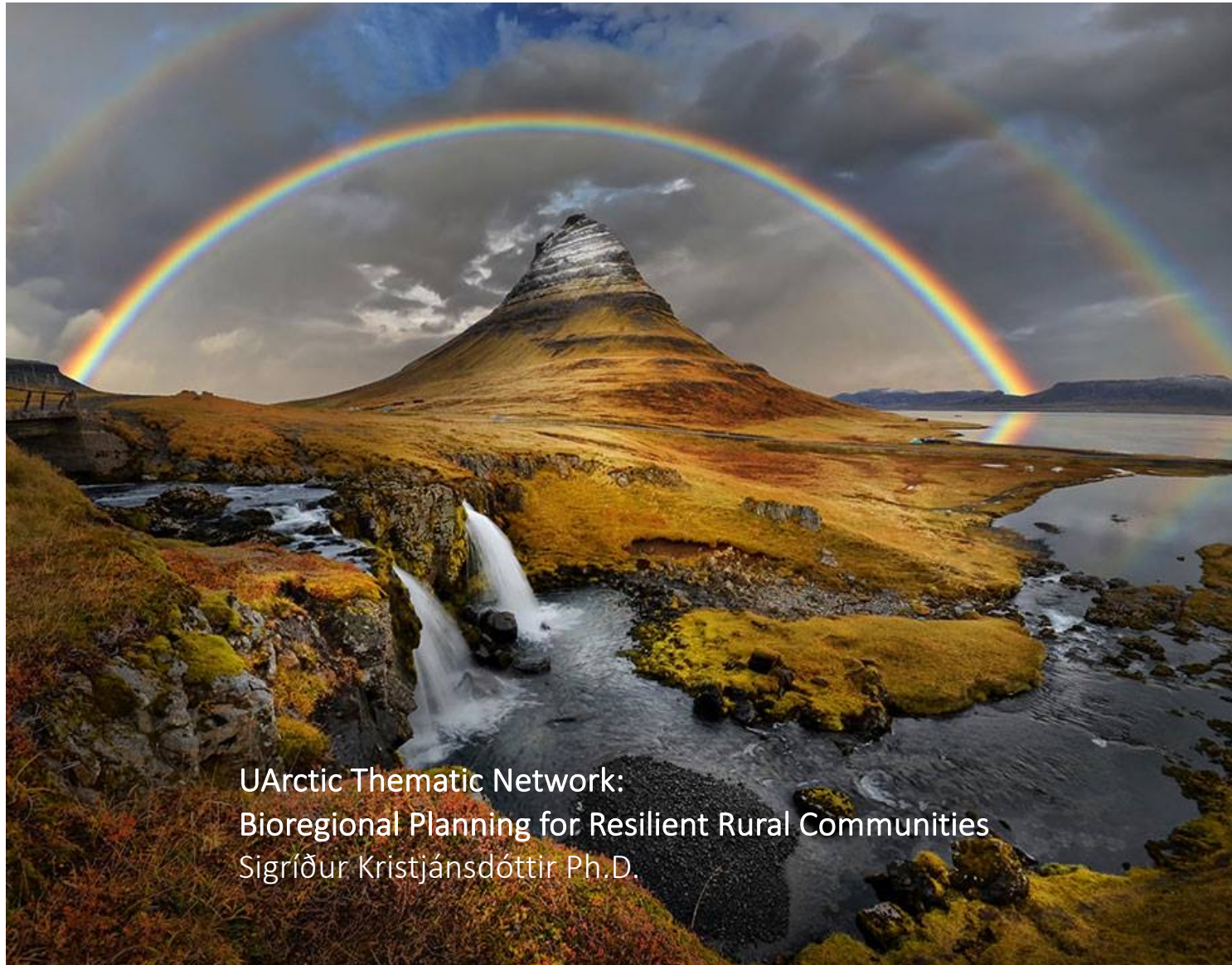
# HQ: Portland Maine @ New England Ocean Cluster



QUESTIONS?

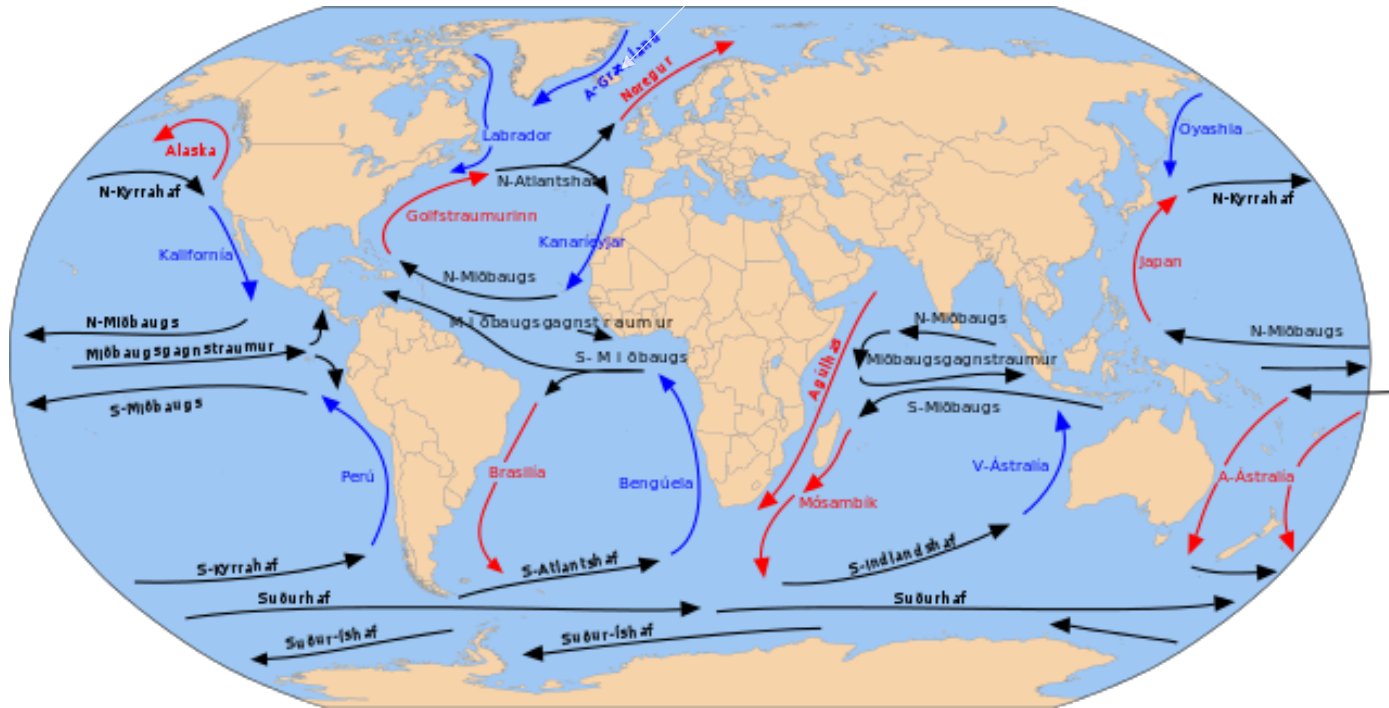
---

**THANK YOU!**

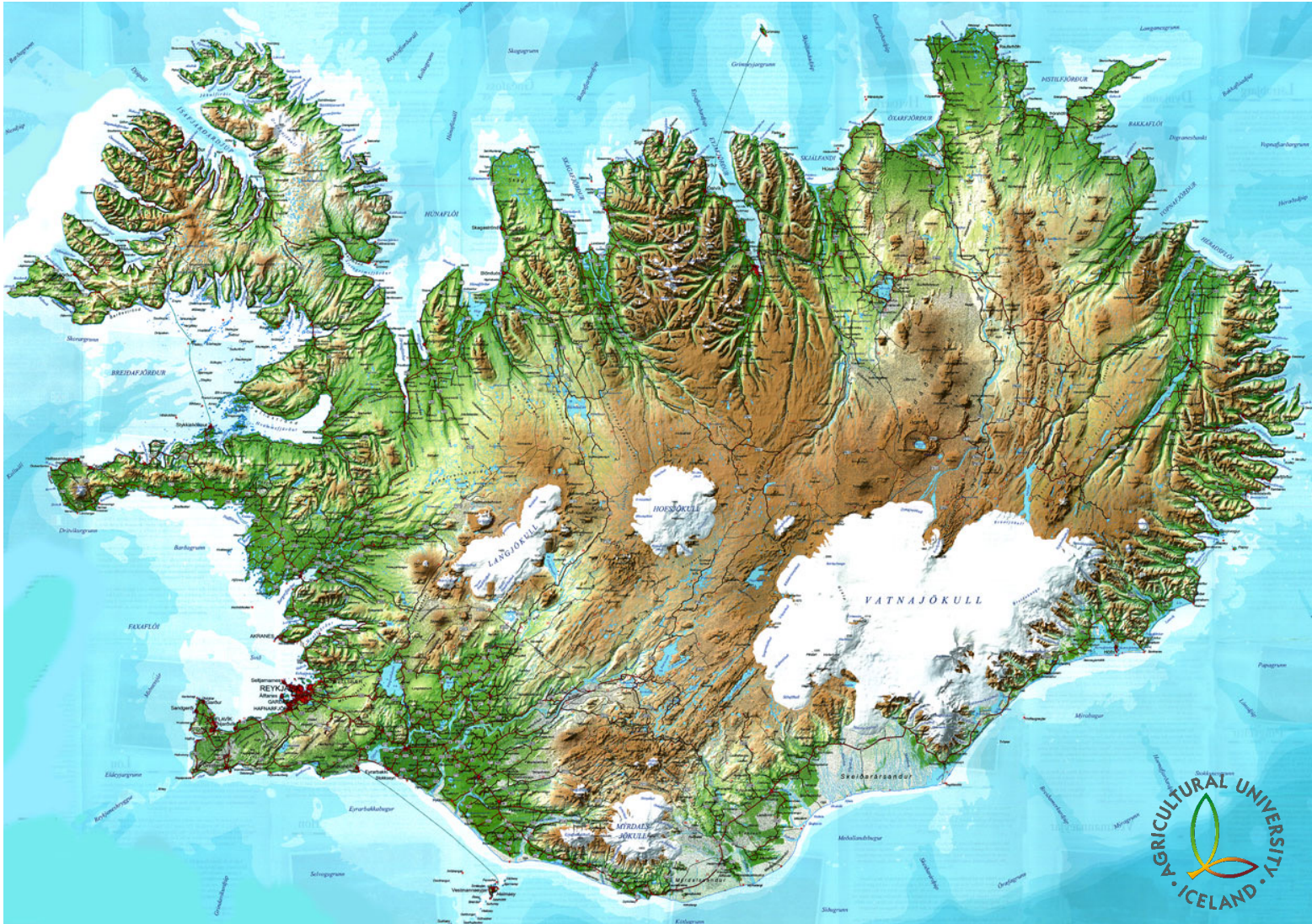


UArctic Thematic Network:  
Bioregional Planning for Resilient Rural Communities  
Sigríður Kristjánsdóttir Ph.D.

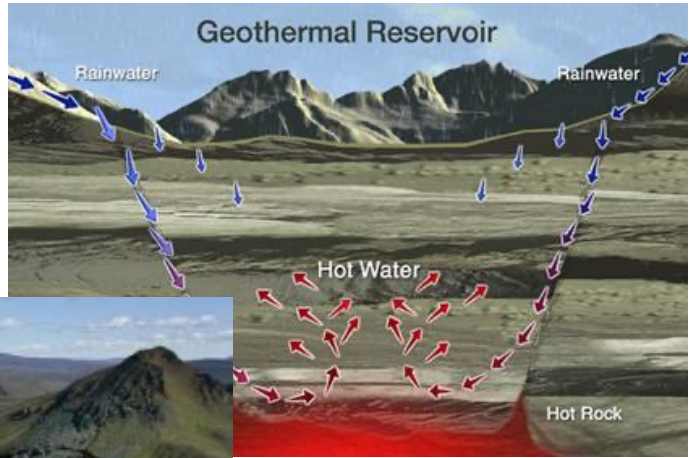
Iceland



Ocean Currents





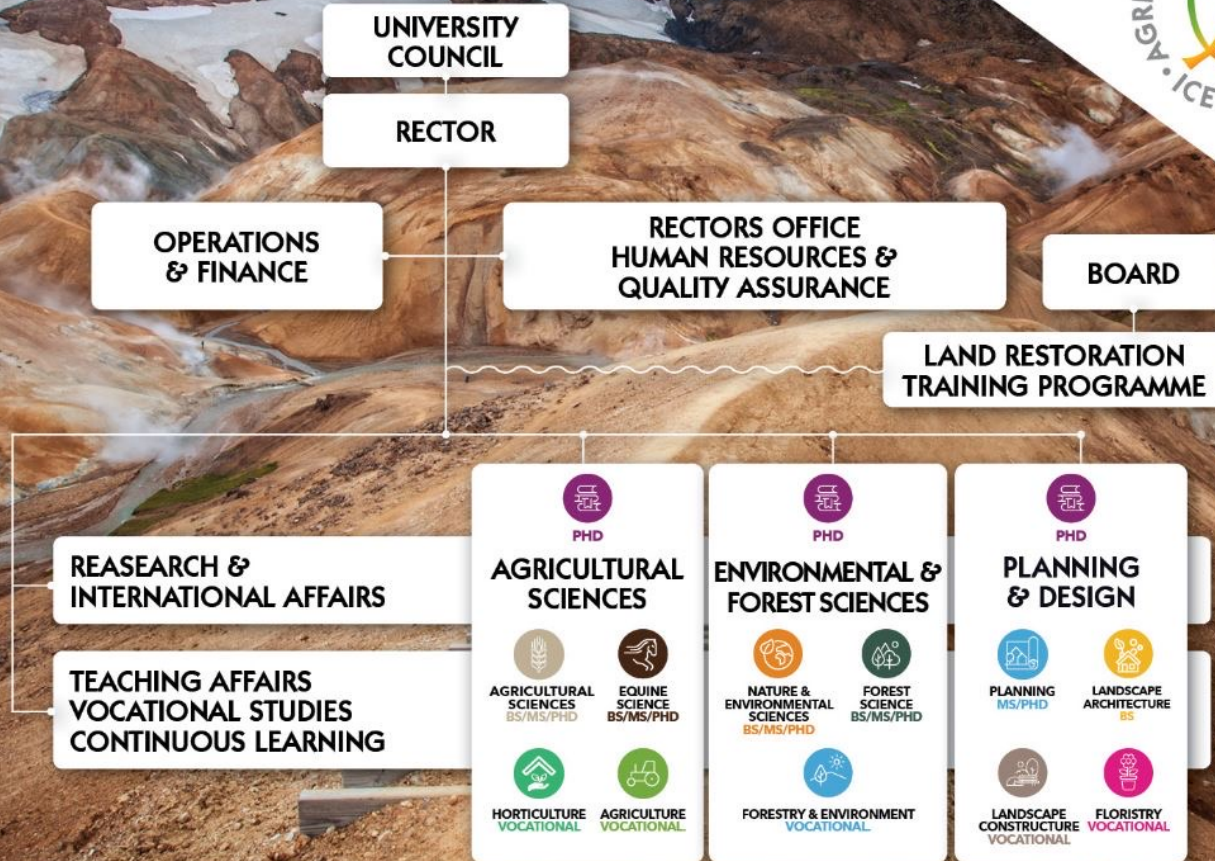




# Agricultural University of Iceland



# ORGANISATIONAL CHART



SUSTAINABILITY - PROSPERITY - PROGRESSIVENESS



- **Agricultural Science**
  - Economic, biological and technical conditions for livestock and land utilization
  - Various aspects of agricultural sciences, fx. Feeding, breeding, housing and animal well-being
- **Equine Science**
  - Focus on knowledge base in all areas of equine science with special emphasis on the Icelandic horse
  - Two year at Hvanneyri and one year at Hólar University for courses in riding and specialized courses





## • Nature and Environmental Science

- Focus on both Icelandic nature and resources as well as global perspective
- Emphasis is on broad, interdisciplinary and ecological approach
- Students are familiar with the basic functions and components of ecosystems and ecological processes



## Academic Programmes –undergraduate studies



- **Forest Science, Restoration Ecology and Management**
  - Natural resource management with emphasis on establishment and management of forests and restoration and management of degraded land
  - forest planning (including landscape analysis), project management, technology, inventory, and innovation



## Academic Programmes –undergraduate studies



- Landscape architecture

- Interaction of planning, Icelandic nature and well being of inhabitants
- soil science, botany, ecology, environmental impact assessment
- cartography, planning science and computerized design as well as courses in human geography, economics, landscape analysis drawing and planning.
- The environment shapes the man!



# Graduate Studies



- **Planning. Master of Science program**

- Combines planning theory and practice and the Icelandic circumstances, aiming for sustainable development and the creation of a livable environment
- emphasizes individual work as well as practical case studies where students tackle real problems, thus practicing skills for independent work

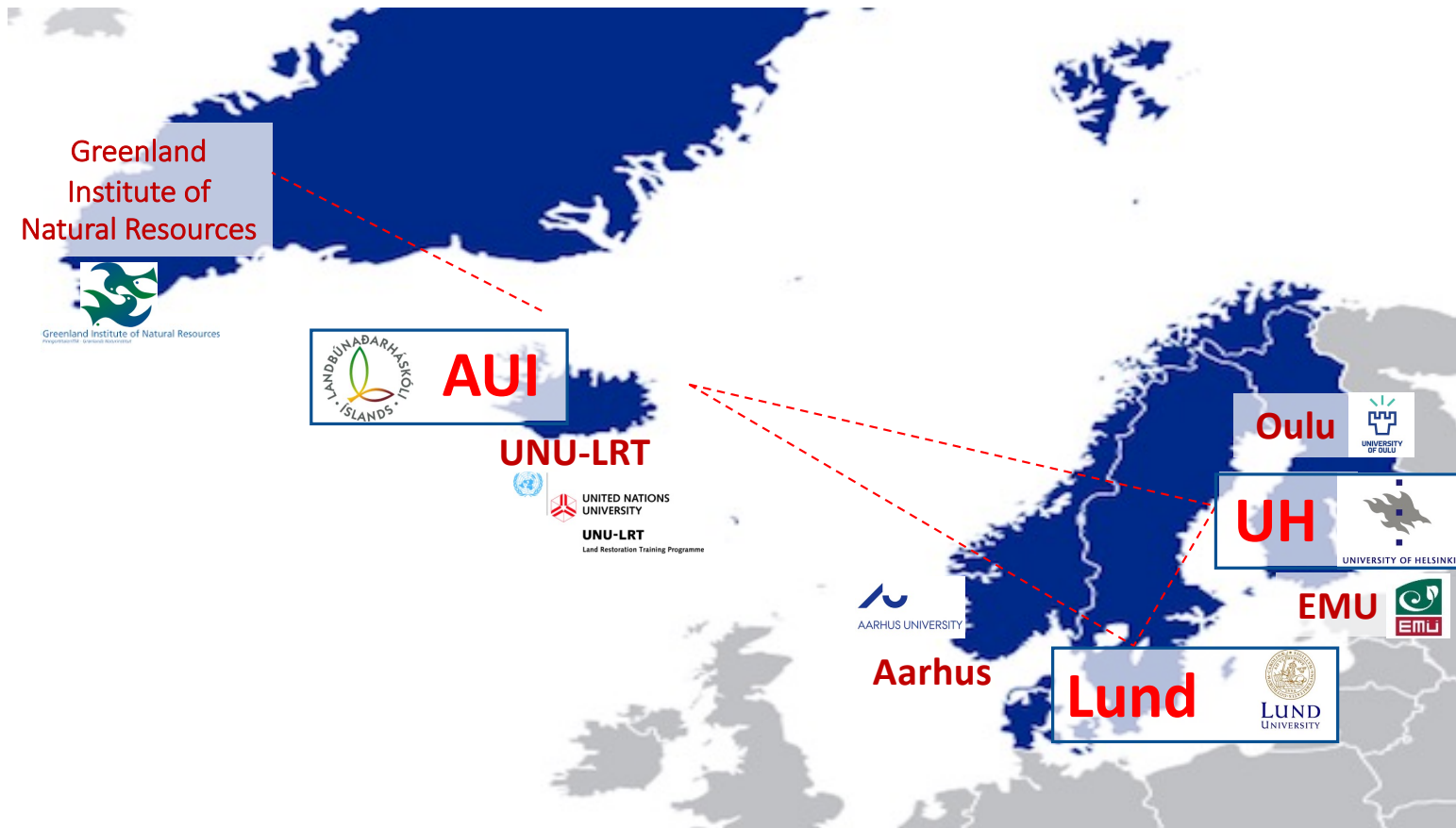






## MSc-program

EnCHiL = Environmental Changes at Higher Latitudes





# Graduate Studies

- **Individually designed M.Sc**
  - designed as an individually planned study scheme
  - The aims of the program are to provide individual scientific education and training in the relevant field of science
  
- **Doctoral Program**
  - give students sound research training within selected academic fields
  - The Program is run jointly with the Centre of Graduate Studies at the University of Iceland (UI)

# University campus at a RAMSAR Site



- Andakíll Protected Habitat Area was designated as a Ramsar Site in 2013
- Important resting, feeding and breeding area for wetland birds
  - Greenland White-fronted goose (resting and feeding)
  - Shelducks
  - White-Tailed Sea Eagle





## The *United Nations* University Land Restoration Training Programme (UNU-LRT)

- provides a postgraduate training for specialists from the developing countries in the broad field of restoration of degraded land and sustainable land management, and aims at assisting developing countries in capacity development within this field.
- six-month training program in Iceland on land restoration and sustainable land management



# PLANNING & DESIGN

Sigríður Kristjánsdóttir, Associate Professor Dean of  
Department and Design.



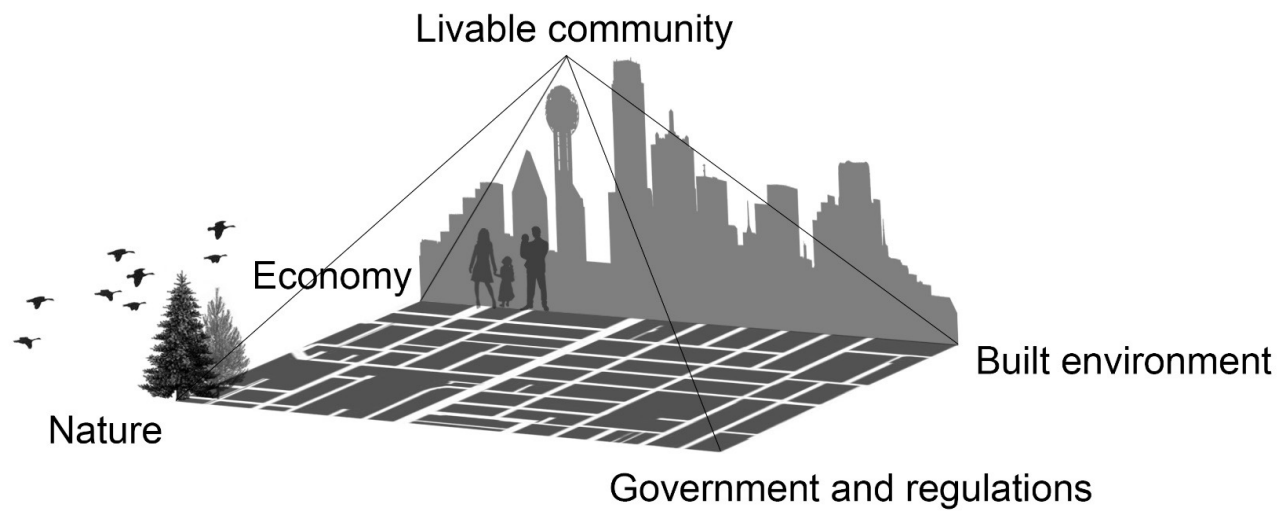
Þórunn Björk Nordal, Lóðsmýnd Vilhelm Guðmarsson



## SKIPULAG & HÖNNUN

- The Faculty of Planning and Design conducts research and teaching in the fields of planning sciences and landscape architecture. The Faculty focuses on planning, design, construction, and management of our environments. The strategy of P&D aligns broadly with the strategy of the AUI, in that the emphasis is on enhancing research, teaching, innovation and international collaboration. Further, the emphasis of activities within P&D on environmental issues and planning different land use contributes to distinguishing AUI from other universities in Iceland.
- The role of the Faculty is to strengthen research, teaching, and innovation in the fields of landscape architecture and planning with a focus on the sustainable development goals. As the world continues to urbanize at an unprecedented rate, the demand for our work in P&D is more urgent than ever. Our planners, designers, and landscape architectures innovators are working to empower communities, protect natural and cultural environments, and confront the most pressing challenges of our time.

# PLANNING MS



The Planning pyramid. Kristjánsdóttir 2018,p.8.

Maria Wilke  
PhD student

*Resilient  
Sustainable Coasts  
(COAST)*





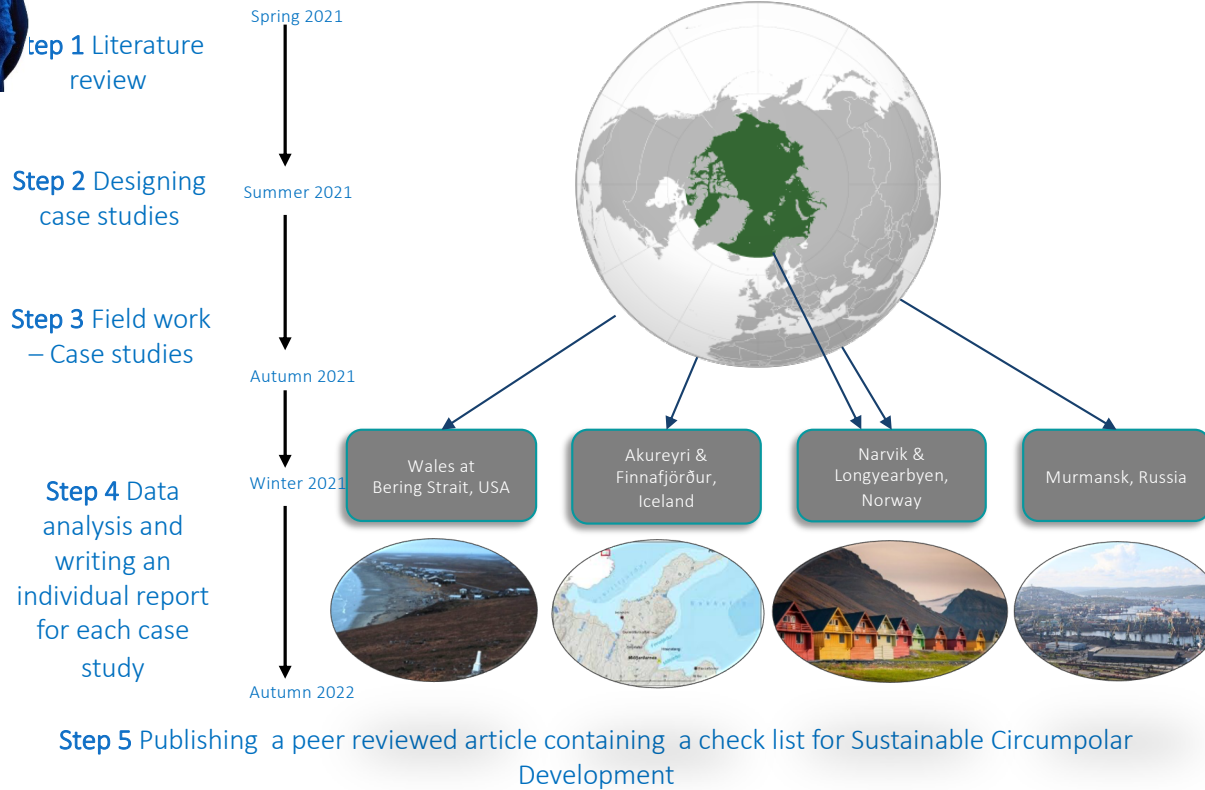
# UArctic Thematic Network (TN)

- Thematic Network (TN) *Local-scale Planning, Climate Change and Resilience*. Partner in the TN since September 2019.
- **Graduate Seminar on Climate Change Impacts and Responses in the Arctic** April 26, 2021 10am to 12:30pm (MDT) University of Alberta (via Zoom)
- Co-hosting a seminar at the **UArctic Congress in Reykjavik**, October 6-8, 2020 – post ponedged (Online) May 15-18 2021





# Sustainable Circumpolar Development



URBAN PLANNING AND ENVIRONMENT  
SERIES EDITORS: DONALD MILLER AND NICOLE GURRAN

URBAN PLANNING AND ENVIRONMENT

No  
Edite

# Nordic Experiences of Planning Policy and Practice

For well over a decade  
in planning through  
experiencing a paradigm  
regards to sustainability  
them into an impact

## Nordic Experiences of Sustainable Planning Policy and Practice

Edited by  
Sigríður Kristjánsdóttir,  
Assistant Professor,  
Faculty of Natural  
Resources and  
Environmental Sciences,  
Agricultural University of  
Iceland

This book  
in the field  
increasing  
scholarship  
architecture  
tourism  
shaped  
Case studies  
and De  
learned  
focus  
and reg  
on the  
future.

This book  
academ  
policy,



**Routledge**  
Taylor & Francis Group  
www.routledge.com

Routledge titles are available as eBook editions in a range of digital formats

ROUTLEDGE



Edited by  
Sigríður Kristjánsdóttir

ROUTLEDGE



UArctic Thematic Network:  
Bioregional Planning for Resilient Rural Communities  
Sigríður Kristjánsdóttir Ph.D. Associate professor, Dean of Department  
of Planning and Design, AUI.

# Bioregional Planning for Resilient Rural Communities



University of the  
Highlands and Islands  
Oilthigh na Gàidhealtachd  
agus nan Eilean

Region

University

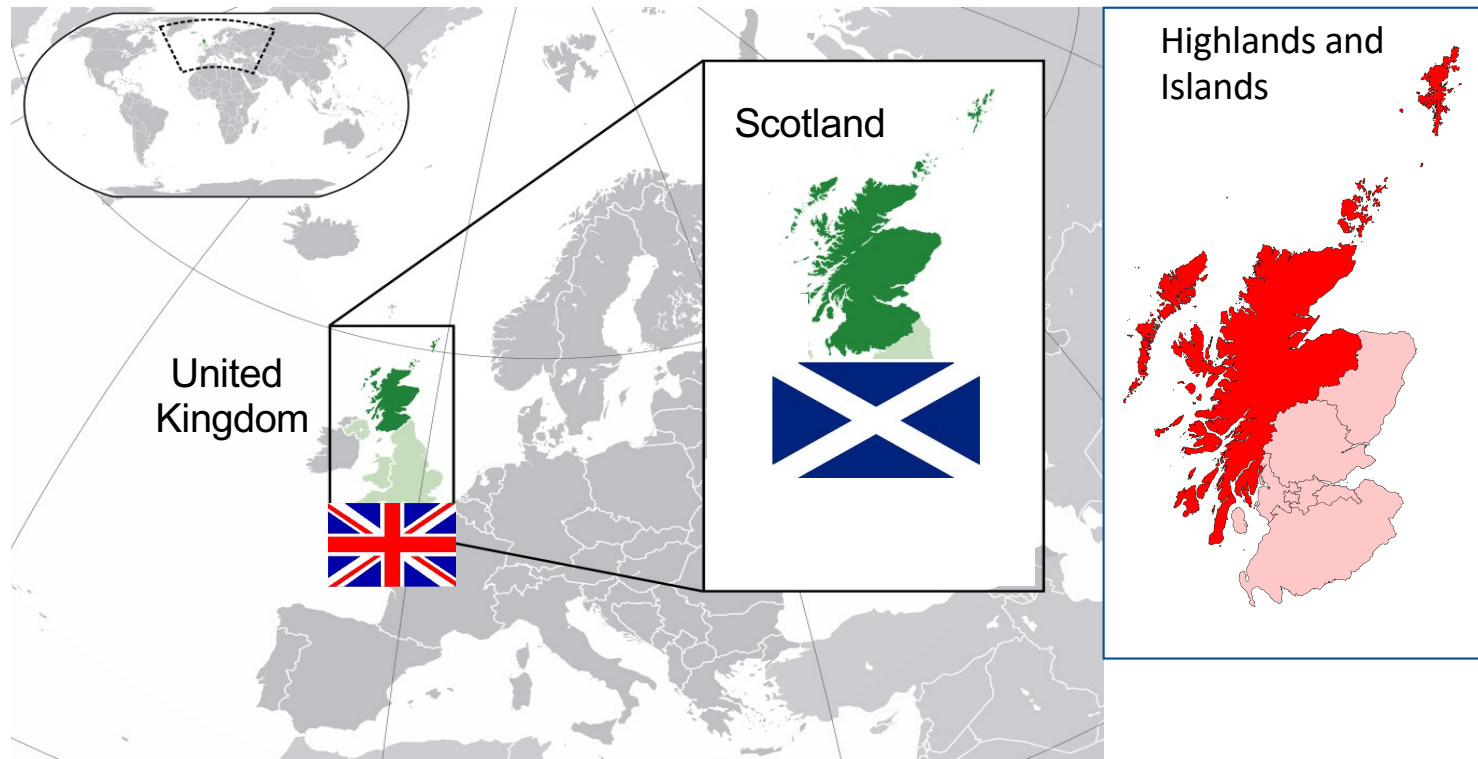
Network

Opportunity

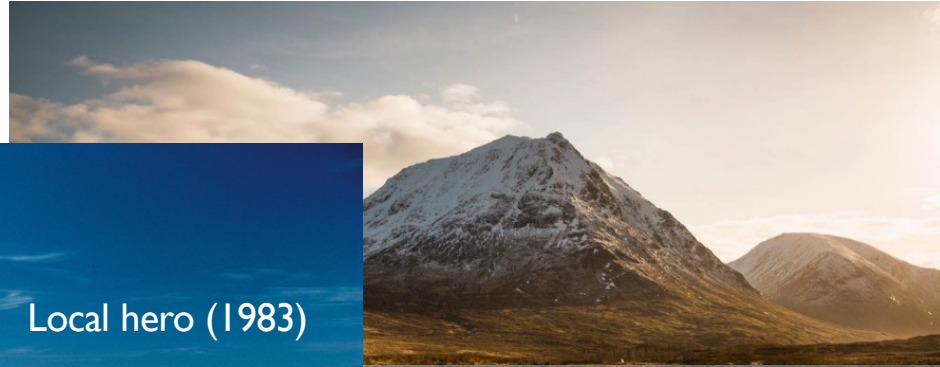
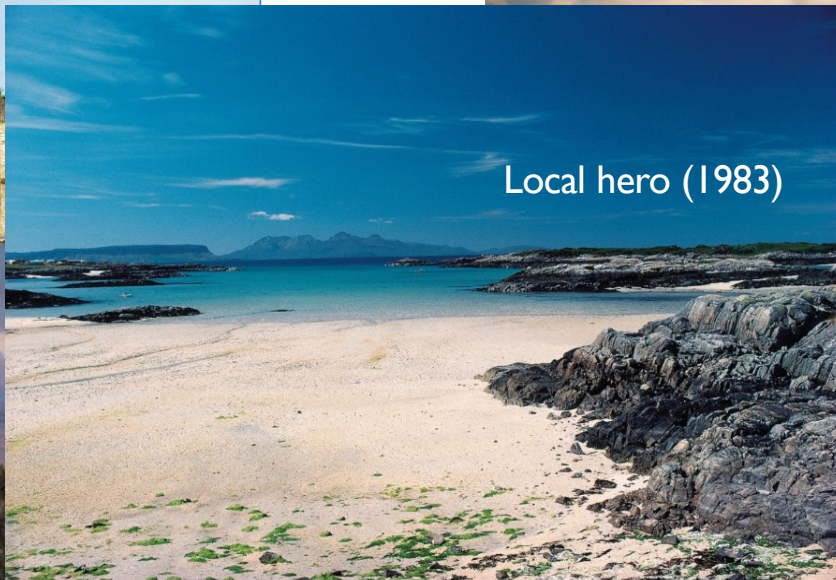


Prof Stuart Gibb

# Region: Geography



# A well known region..

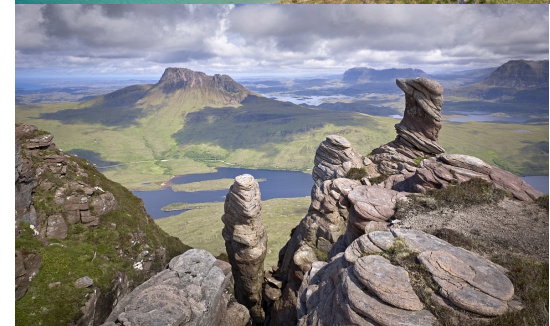


All images:  
VisitScotland

Harry Potter - various

# The region

- Distinctive region: **History, culture, environment**
  - >100 inhabited islands
  - ~10,000 km coastline
  - extensive mountain regions
- **Population:** 489,330 < 10 % Scotland
  - ~ 60 % landmass
  - 9 persons per km<sup>2</sup>
  - distinctive socio-economics
- Share common **challenges & opportunities** with regions around High North and Arctic regions
- Founding Member of UArctic (non-Arctic)





# Region: Economy

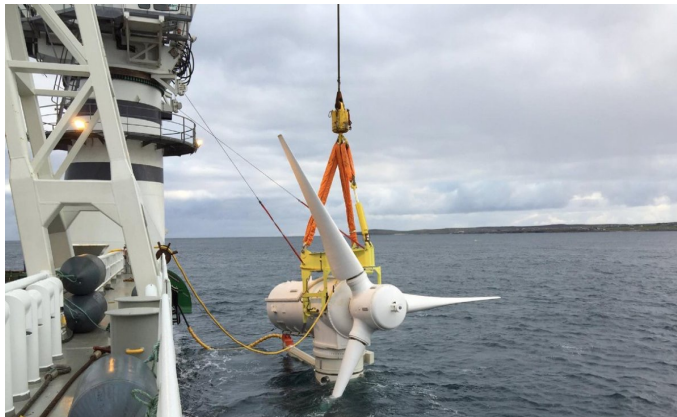
A 'mosaic' of economies. But compared to Scotland as a whole:

- + tourism and recreation
- + agriculture, aquaculture, forestry and fishing

- professional, scientific and technical

- + public sector
- + small businesses / seasonal

Growth sectors include:  
Renewables, Food and drink

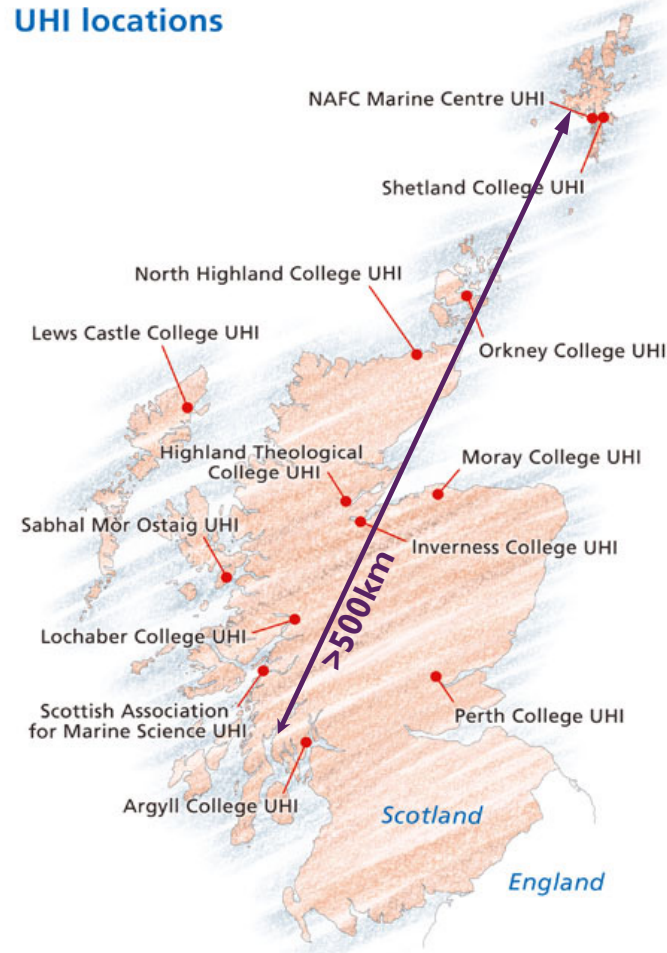


# The University of the Highlands & Islands (UHI)



## UHI locations

- Distinctive regional model of 13 partners
  - Further + higher education colleges + Specialist colleges + Research institutions
- Scotland's newest University (2011)
- Scotland's most northerly University
- Encompassing further & higher education and research .....
- ....enriched by the people, natural environment, economy, culture and heritage of our region and its communities



# UHI & the UArctic thematic network



## Bioregional Planning for Resilient Rural Communities Network

- international network of interdisciplinary  
researchers

### **Mission**

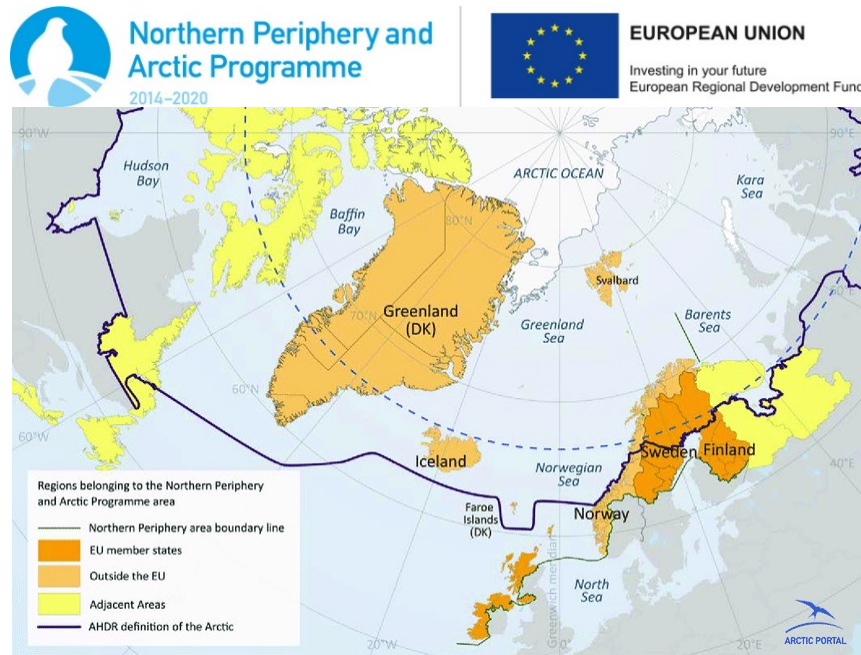
*To have a transformational impact on the  
prospects of our region, its economy, its  
people and its communities*

Share common challenges & opportunities  
with regions around High North and  
Arctic regions

### **Thematic Focus**

- understanding the role that bioregional & systems strategies can play in supporting rural Northern communities
- activating those strategies in an intentional, place-based way to promote resilience in the face of climate change & other disruptive events

Relevant activity e.g.



# Key characteristics



- **Interdisciplinary**
- beyond international.....**inter-regional**
- **inter-generational** - often missed
- **"people of the place"**. At the core – not an add-on

## Helping meet challenges



UNITED NATIONS®  
**SUSTAINABLE  
DEVELOPMENT  
GOALS**

# Extending the invitation



- New UArctic Network – Initial partnership
- Developmental phase
- Opportunity to join us to
  - help shape network
  - make it it work for our regions !



Stuart.Gibb@uhi.ac.uk



**UArctic Thematic Network**  
**“BIOREGIONAL PLANNING FOR RESILIENT RURAL  
COMMUNITIES”**  
**Tyumen State University**

**Webinar: SEPTEMBER 14, 2021**

**Speaker: Elena Gladun, PhD in Law**

**professor of Public Administration Department**

**Fulbright Arctic Initiative researcher**

**[efgladun@yandex.ru](mailto:efgladun@yandex.ru)**



Tyumen Region (Western Siberia)



Research projects in the region



Carbon Polygon (1<sup>st</sup> in Russia)



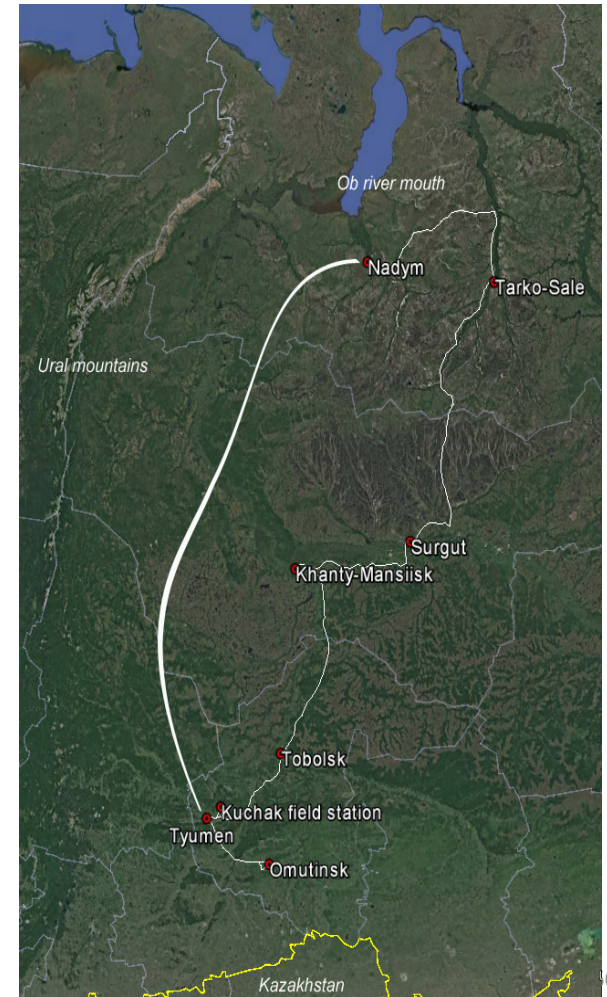


# Research station: landscape and facilities



Надым, 2016

# International Summer School “Way to the North”



## Tyumen State University:

### *Who we are and what our institution does?*

## Tyumen Region: specifics

- Rural communities are currently experiencing transformation processes leading to a strong differentiation in the quality of life in rural settlements
- Disparities in infrastructure development and natural resources
- Unfavorable bioclimatic, bioresource conditions
- Youth migration from rural communities
- Economic growth VS deterioration in the quality of the environment and a reduction in natural capital

# Tyumen State University:

## *Who we are and what our institution does?*

Our project: **REGION GREEN TRANSFORMATION: VALUES, PRACTICES, SOCIO-ECONOMIC EFFECTS**

Project group: Olga Zakharova, PhD in philosophy, associate professor, [olga.hazarova@mail.ru](mailto:olga.hazarova@mail.ru)  
Natalia Zherebyatyeva, PhD in Geography, associate professor, [n.v.zheryatyeva@utmn.ru](mailto:n.v.zheryatyeva@utmn.ru)  
Irina Akhmedova, PhD in Social Geography, researcher  
Natalia Viktorova, PhD in Economics, associate professor



## REGION GREEN TRANSFORMATION: VALUES, PRACTICES, SOCIO-ECONOMIC EFFECTS

*What is our project's focus on?*

**We aim:** to explore conditions and to develop mechanisms and tools of planning, regulating and implementation of green practices and green values in the region enhancing its socio-economic development and “greening” of all activities and decisions

**Expected result:** to design a regional strategy systemizing institutional, organizational, legal and technical measures to support green practices and green businesses in Tyumen Region

**Term of realization: 2019-2023**



# REGION GREEN TRANSFORMATION: VALUES, PRACTICES, SOCIO-ECONOMIC EFFECTS

*Why are we joining the network?*

**We aim:** discussion, joint development of tools and strategies for sustainable regional development (for example, risky agriculture, preservation of natural capital and biocapacity in the northern territories)

**Expected result:** case-studies, policy briefs, joint publications, students' projects and curriculum development

# BIOREGIONAL PLANNING FOR RESILIENT RURAL COMMUNITIES

*Why are we joining the network?*

Analytical work  
(cases-studies and  
models of different  
countries)

Projecting work  
(joint development of  
transformation tools  
and instruments)

Planning work  
(policy briefs, regional  
strategies, publications,  
curriculum)

Study of the current  
condition in Russia:  
statistical data, social  
networks, interviews,  
discussions with  
stakeholders



Database of “green  
practices” and  
bioregional planning  
Information platform  
“Green networking”  
Interactive map of green  
practices in Russian  
regions

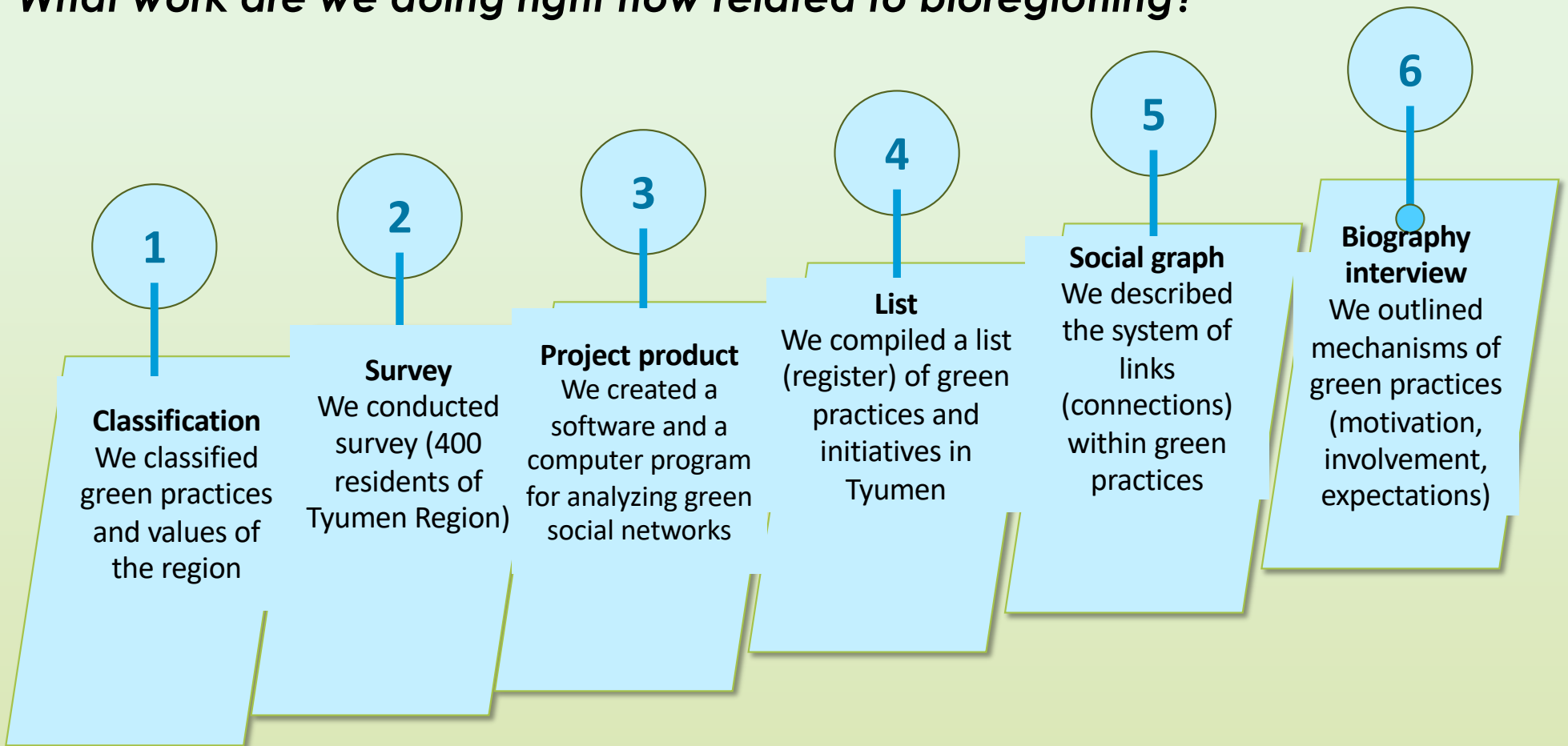


Green transformation  
model  
Recommendations for  
decision-making  
authorities  
Roadmap  
Timelines, etc.

Regional green transformation

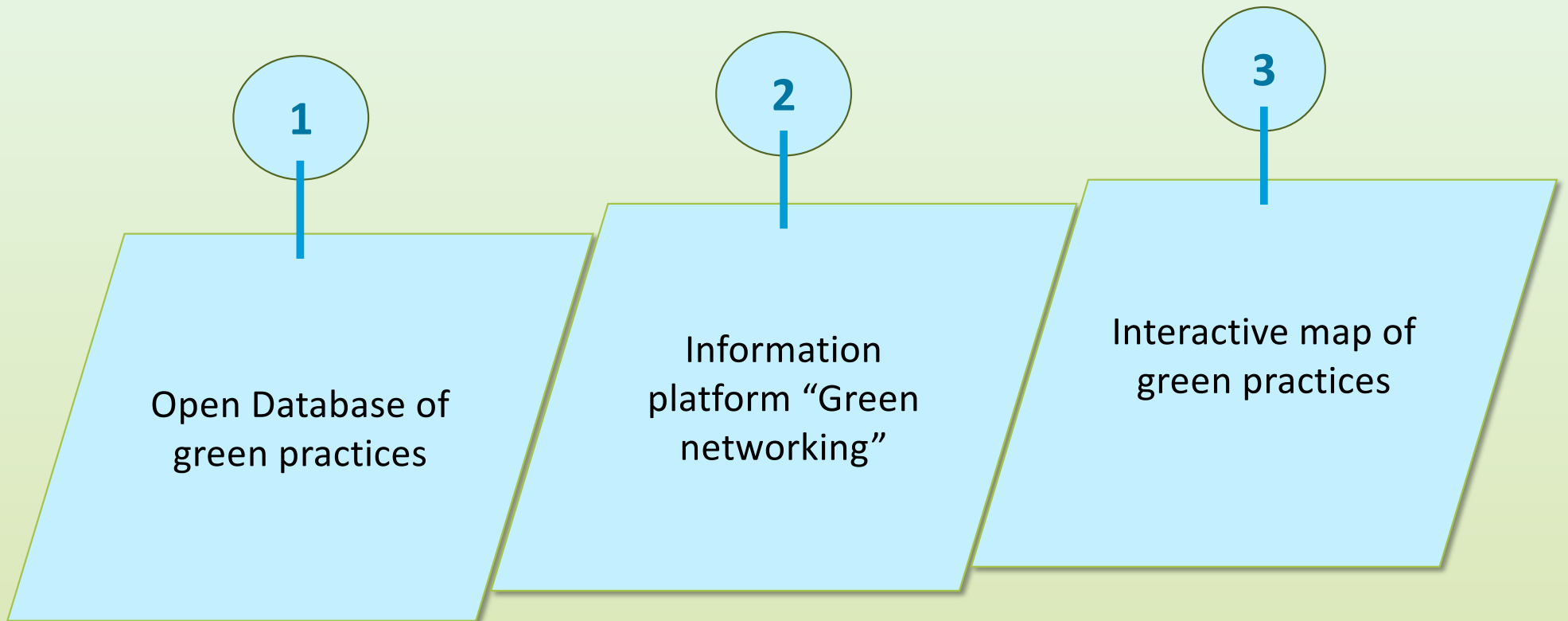
## REGION GREEN TRANSFORMATION: VALUES, PRACTICES, SOCIO-ECONOMIC EFFECTS

*What work are we doing right now related to bioregioning?*

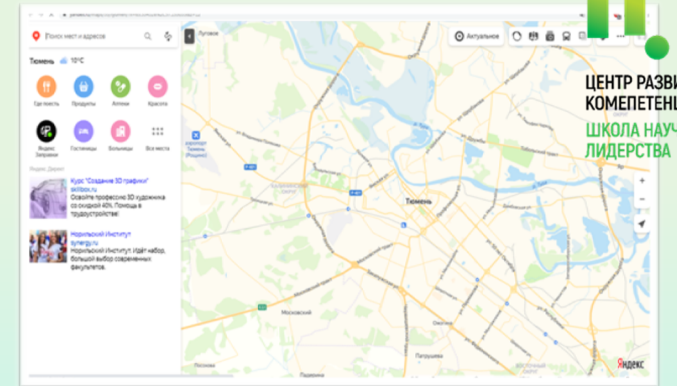
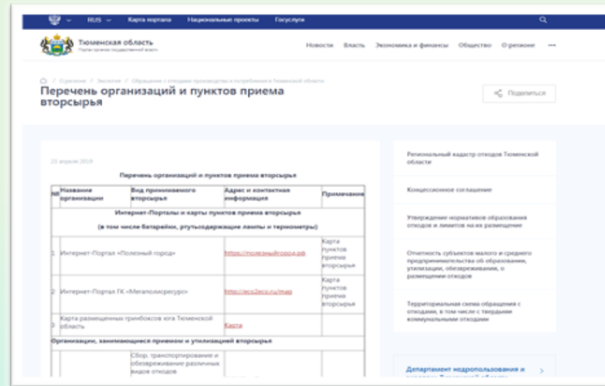
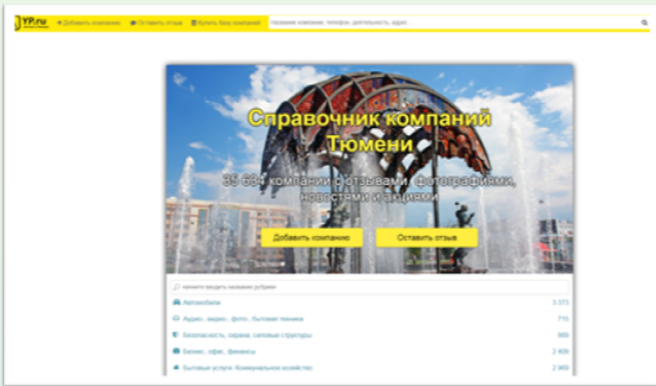




## Project products



# Open database of green practices



ЦЕНТР РАЗВИТИЯ КОМПЕТЕНЦИ ШКОЛЫ НАУЧНОГО ЛИДЕРСТВА



Overview

Sheet 1: Разд.сбор отх

наименование организации	организационная форма (ООО, ИП, ЗАО и т.д.)	Фондовый, илн, отчетный регистрационный номер	адрес, телефон	вид деятельности (деятельность)	ОКВЭД (основной)	E-mail организации	сайт (страницы) организации	интернет-ресурс (есть/нет)	участие в экологических программах	дополнительные мероприятия (основные мероприятия)
«ЭКОЛОГИЧЕСКИЙ ЦЕНТР»	ООО	Сараева Людмила Александровна	Тюмень, Дворовая ул., д. 140, оф. 312. Тел: 49-21-40	Деятельность по сбору, переработке и утилизации отходов 1-2V	20.11.1	ecocenter@yandex.ru	http://www.ecocenter.ru	есть	есть	
«Бирда, Эко-Технологии»	ООО	Бирда Мария Александровна	Тюмень, ул. Мухоморова, д. 100, оф. 312. Тел: 49-21-40	Деятельность по сбору, переработке и утилизации отходов 1-2V	20.11.1	birda@mail.ru	http://www.birda.ru	есть	есть	Участие в акции «Чистая планета», «Чистый город»
«Бирда, Эко-Технологии»	ООО	Бирда Мария Александровна	Тюмень, ул. Мухоморова, д. 100, оф. 312. Тел: 49-21-40	Деятельность по сбору, переработке и утилизации отходов 1-2V	20.11.1	birda@mail.ru	http://www.birda.ru	есть	есть	Участие в акции «Чистая планета», «Чистый город»
«ЭкоПай»	ООО	Бирда Мария Александровна	Тюмень, ул. Мухоморова, д. 100, оф. 312. Тел: 49-21-40	Деятельность по сбору, переработке и утилизации отходов 1-2V	20.11.1	ecopay@mail.ru	http://www.ecopay.ru	есть	есть	Участие в акции «Чистая планета», «Чистый город»
«ЭкоСистема»	ООО	Бирда Мария Александровна	Тюмень, ул. Мухоморова, д. 100, оф. 312. Тел: 49-21-40	Деятельность по сбору, переработке и утилизации отходов 1-2V	20.11.1	ecosystem@mail.ru	http://www.ecosystem.ru	есть	есть	Участие в акции «Чистая планета», «Чистый город»
«Система Полимер»	ООО	Бирда Мария Александровна	Тюмень, ул. Мухоморова, д. 100, оф. 312. Тел: 49-21-40	Деятельность по сбору, переработке и утилизации отходов 1-2V	20.11.1	system@mail.ru	http://www.system.ru	есть	есть	Участие в акции «Чистая планета», «Чистый город»



Реестр зеленых практик  
sulkamava1992

wastepoints

79 wastepoints

Копировать

название организации  
"Пакета нет"

form  
ИП

director  
Шелемеха Кристина Сергеевна

address\_con  
ул. Республики, 61 Тел: +7-922-072-2...

activity  
Эко-маркет

okved  
Деятельность по розничной торговле ...

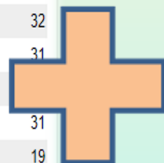
e\_mail  
нет

# Interactive map of green practices

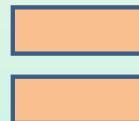
Все | Десктопы | Мобильные | Только телефоны | Толь

Что искали со словом «экомаркет» — 345 показов в месяц

Статистика по словам	Показов в месяц
<a href="#">экомаркет</a>	345
<a href="#">экомаркет тюмень</a>	200
<a href="#">экомаркет интернет</a>	106
<a href="#">магазин экомаркет</a>	101
<a href="#">экомаркет интернет магазин</a>	98
<a href="#">экомаркет тюмень интернет</a>	74
<a href="#">экомаркет тюмень интернет магазин</a>	69
<a href="#">экомаркет продукты</a>	32
<a href="#">экомаркет интернет магазин продуктов</a>	31
<a href="#">экомаркет магазин продуктов</a>	31
<a href="#">экомаркет продукты интернет</a>	19
<a href="#">экомаркет тюмень интернет магазин продукты</a>	19
<a href="#">экомаркет гринвей</a>	19
<a href="#">экомаркет москва</a>	13
<a href="#">брусника экомаркет</a>	11
<a href="#">экомаркет</a>	0



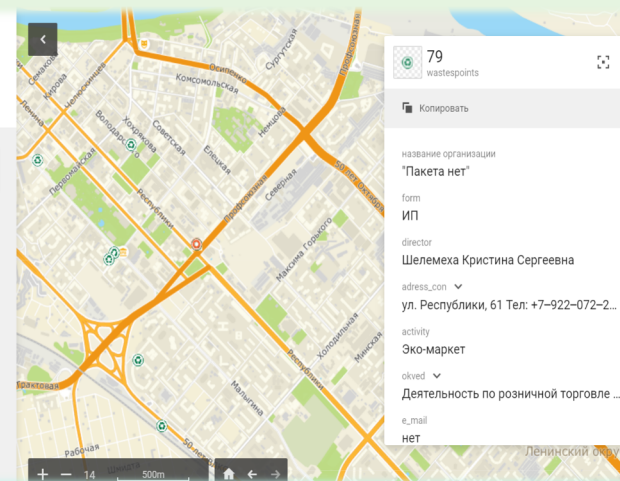
Study of the territory



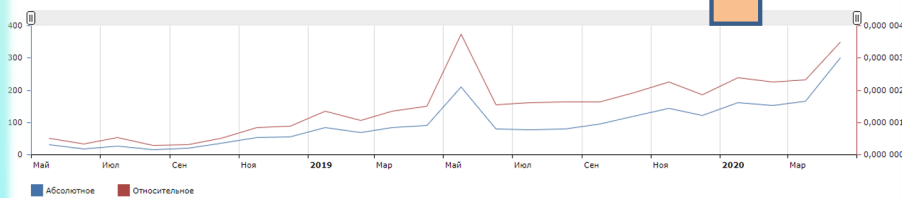
## Реестр зеленых практик

suikamaeva1992

wastespoints



фильтровать по: месяц | неделя | Все | Десктопы | Мобильные | Только телефоны | Только планшеты



Период	Абсолютное	Относительное	Период	Абсолютное	Относительное
01.05.2018 - 31.05.2018	30	0,000 000 503 060	01.05.2019 - 31.05.2019	209	0,000 003 741 934
01.06.2018 - 30.06.2018	18	0,000 000 341 629	01.06.2019 - 30.06.2019	79	0,000 001 557 359
01.07.2018 - 31.07.2018	27	0,000 000 531 602	01.07.2019 - 31.07.2019	77	0,000 001 604 523
01.08.2018 - 31.08.2018	15	0,000 000 292 122	01.08.2019 - 31.08.2019	79	0,000 001 624 534
01.09.2018 - 30.09.2018	20	0,000 000 318 771	01.09.2019 - 30.09.2019	84	0,000 001 646 514

## СЕМЕНТ «ДОМ»

Основное | Города и устройства | Интересы и категории

Интересы (аффинити-индекс)	
Недвижимость	153%
Финансы	138%
IT	132%
Авто	131%
Туризм	130%
Спорт	128%
Красота и здоровье	125%
Семья и дети	122%
Домашние животные	119%
Кулинария	109%

Категории (аффинити-индекс)	
Путешествуют по миру	181%
Путешествуют по стране	153%
Автомобилисты	150%
Студенты	140%
Занимаются спортом	136%
Следят за модой	125%
Домохозяйки	120%
Есть дети	101%
Покупают в интернете	100%
Геймеры	100%

2000+ СОВМЕСТНЫХ ПРОЕКТОВ

# Единая площадка для взаимодействия власти, бизнеса и зеленых практик

ПОДРОБНЕЕ О ПРОЕКТЕ

**Ольга Краченко**  
Здравствуйте! Готова помочь вам. Напишите мне, если у вас появятся вопросы.

## ПОДРОБНЕЕ О ПРОЕКТЕ



Мы поможем власти сохранить будущее нашей страны  
Подробнее



## Что мы можем дать бизнесу?

• Информация о рыночных нишах (для развития)



### Зеленый бизнес

Совершенствуйте свой бизнес-продукт, оберегайте окружающую среду. Найдите необходимую целевую аудиторию. Инвестируйте в самые перспективные экологические проекты.

**Ольга Краченко**  
Здравствуйте! Готова помочь вам. Напишите мне, если у вас появятся вопросы.

зеленая сеть



# Information platform "Green networking"

### Власть и зеленые практики

Мы подготовили единый реестр зеленых практик региона. Для доступа к реестру предусмотрен удобный интерфейс, функции поиска и фильтрации данных, а также возможность интеграции реестра с другими информационными продуктами.

[Получить доступ к реестру](#)

**Ольга Краченко**  
Здравствуйте! Готова помочь вам. Напишите мне, если у вас появятся вопросы.

## ОТ ЗЕЛЕННЫХ ЦЕННОСТЕЙ К ЗЕЛЕНЫМ ДЕЙСТВИЯМ

Власть и бизнес услышат ваш голос!

#### ЕДИНОМЫШЛЕННИКИ

Представитель в сообществе единомышленников, обмен опытом, участие в онлайн-опросах.

#### ИНВЕСТИЦИИ

Привлечение с помощью нашей платформы инвесторов и финансирование в свой проект.

#### РЕКЛАМА

Расскажите о себе. Пусть власть, бизнес и общество узнают о вас и ваших инициативах.

#### ПОДДЕРЖКА

Получите все необходимые инструменты, консультации, экспертные знания у ведущих практиков, информацию об успешных инициативах, действии, мероприятиях, мероприятиях.

**Ольга Краченко**  
Здравствуйте! Готова помочь вам. Напишите мне, если у вас появятся вопросы.